

Bonhams



**Modern Decorative
Art + Design**

Los Angeles | October 25, 2018



Modern Decorative Art + Design

Los Angeles | Wednesday October 25, 2018 at 1pm

BONHAMS

7601 W. Sunset Boulevard
Los Angeles CA 90046
bonhams.com

PREVIEW

Los Angeles

Friday October 19,
12pm to 5pm
Saturday October 20,
12pm to 5pm
Sunday October 21,
12pm to 5pm
Monday October 22,
12pm to 5pm
Tuesday October 23,
12pm to 5pm
Wednesday October 24,
12pm to 5pm

SALE NUMBER: 24982

CATALOG: \$35

LOT SYMBOLS

W - Oversized lots
Y - CITES

BIDS

+1 (323) 850 7500
+1 (323) 850 6090 fax

To bid via the internet please visit
www.bonhams.com/24982

Please note that telephone bids must be submitted no later than 4pm on the day prior to the auction. New bidders must also provide proof of identity and address when submitting bids. Telephone bidding is only available for lots with a low estimate in excess of \$1000.

Please contact client services with any bidding inquiries.

Please see pages 181 to 184 for bidder information including Conditions of Sale, after-sale collection and shipment.

INQUIRIES

Los Angeles

Jason Stein
Director
+1 (323) 436 5466
jason.stein@bonhams.com

Angela Past
Senior Specialist
+1 (323) 436 5422
angela.past@bonhams.com

Katherine Miller
Business Administrator
+1 (323) 436 5445
katherine.miller@bonhams.com

New York

Dan Tolson
Director
+1 (917) 206 1611
dan.tolson@bonhams.com

Benjamin Walker
Head of Department
+1 (212) 710 1306
benjamin.walker@bonhams.com

ILLUSTRATIONS

Front Cover: Lot 299
Back Cover: Lot 222
Inside front cover: Lot 92
Inside back cover: Lot 290

REGISTRATION IMPORTANT NOTICE

Please note that all customers, irrespective of any previous activity with Bonhams, are required to complete the Bidder Registration Form in advance of the sale. The form can be found at the back of every catalogue and on our website at www.bonhams.com and should be returned by email or post to the specialist department or to the bids department at bids.us@bonhams.com

To bid live online and / or leave internet bids please go to www.bonhams.com/auctions/24982 and click on the Register to bid link at the top left of the page.

Bonhams

220 San Bruno Avenue
San Francisco, California 94103
© 2018, Bonhams & Butterfields
Auctioneers Corp.; All rights reserved.
Bond No. 57BSBGL0808

1

NEWCOMB COLLEGE (1895-1940)

Vase

1901

probably decorated by Marie Medora Ross, high glaze pottery, with
underglazed and impressed factory marks
height 6 3/4in (17cm)

\$3,000 - 5,000

Newcomb College pottery created between 1900-1910 was known to
have buff backgrounds with the subjects rendered in shades of blue
and green. The majority of the designs were taken from nature



2

DIRK VAN ERP (1860-1933)

Table Lamp

circa 1910

hammered copper and mica, impressed Windmill mark with ghost of
D'Arcy Gaw

height 17 1/2in (44.5cm); diameter 18in (46cm)

\$10,000 - 15,000



3
TIFFANY STUDIOS (1899-1919)
Vase
circa 1905
engraved cameo glass, engraved '4558 B
L.C. Tiffany-Favrile'
height 7in (17.8cm)

\$1,000 - 1,500

4
TIFFANY STUDIOS (1899-1919)
Vase
circa 1910
decorated Favrite glass, engraved 'L.C.T.'
height 5in (12cm)

\$1,500 - 2,000

5
TIFFANY STUDIOS (1899-1919)
Tel-El-Amarna Vase
circa 1920
favrite glass, engraved '7315 N L.C. Tiffany
Inc. Favrile'
height 5in (13cm)

\$1,500 - 2,500



3



4



5

6

TIFFANY STUDIOS (1899-1919)

Vase

circa 1910

Favrile glass in butterscotch with silver triple wave band below the mouth, signed '4556G

L.C. Tiffany - Favrile'
height 10in (25.5cm)

\$3,000 - 5,000

7

TIFFANY STUDIOS (1899-1919)

Vase

circa 1910

glazed pottery, signed 'L.C. Tiffany-Favrile
Bronze Pottery BP520', incised 'LCT'
monogram

height 6 3/4in (17cm)

\$3,000 - 4,000



6



7



8

8 W

TIFFANY STUDIOS (1899-1919)

Linenfold Harp Floor Lamp

early 20th century

Favrile Fabrique glass, patinated bronze,

shade impressed 'TIFFANY STUDIOS NEW YORK',

base impressed 'TIFFANY STUDIOS NEW YORK 423H'

height 57 1/2in (146cm); diameter 9 1/2in (24.3cm)

\$4,000 - 6,000

9

TIFFANY STUDIOS (1899-1919)

'Pomegranate' Shade

circa 1910

leaded glass, patinated bronze,

stamped 'TIFFANY STUDIOS NEW YORK'

height 6in (15cm); diameter of shade 14in (35cm)

\$4,000 - 6,000



9

10 W

TIFFANY STUDIOS (1899-1919)

Roman Shade

circa 1910

leaded glass and patinated bronze,
impressed 'TIFFANY STUDIOS NEW YORK 1564', together with a
reproduction patinated bronze oil lamp base and pigtail heat cap
diameter of shade 24 1/2in (9cm); height of base 31 1/2in (12cm)

\$15,000 - 20,000

Provenance

Private Collection, Dana Point, California



11
ÉMILE GALLÉ (1846-1904)

Large Vase
circa 1900
fire polished cameo glass, signed 'E.Gallé' on a clover leaf
height 16 1/2in (42cm)

\$4,000 - 6,000



11

12
DAUM FRÈRES (FOUNDED 1825)

Bowl
circa 1905
enameled mottled cameo glass, signed in cameo
'DAUM NANCY' with Cross of Lorraine
height 4 1/2in (11.5cm); width 6in (15cm)

\$3,000 - 5,000



12

13

ÉMILE GALLÉ (1846-1904)

Intercalaire Marine Vase

circa 1900

dense internally decorated and wheel carved glass with surface craquelure, carved 'Gallé'

height 8 3/4in (22cm); width 4 3/4in (12cm); depth 4in (10cm)

\$5,000 - 7,000

Provenance

Estate of Jeffrey Kaufman, Coral Gables, Florida



13

14

RENÉ LALIQUE (1860-1945)

Serpent Vase

Marcilhac 896, model introduced 1924

deep amber, molded and frosted glass, intaglio mark 'R. LALIQUE'

height 10 1/2in (26.7cm); diameter 9 1/2in (10cm)

\$20,000 - 30,000

Provenance

Private Collection, California



14

15
DAUM FRÈRES (FOUNDED 1825)
Grand Marnier Bottle
circa 1910
acid etched, gilt and silvered amber glass
height 7 1/2in (19cm)

\$800 - 1,200

16
DAUM FRÈRES (FOUNDED 1825)
Landscape Vase
early 20th century
cameo glass, signed 'DAUM NANCY'
with the cross of Lorraine
height 8 3/4in (22.1cm)

\$1,000 - 1,500

17
ÉMILE GALLÉ (1846-1904)
Landscape Vase
circa 1900
cameo glass, signed 'Gallé' in cameo,
together with a vase, signed 'Gallé' in cameo
heights 4 7/8in (12.4cm) and 9 1/8in (23cm)
(2)

\$1,800 - 2,500



15

16

17

17

18
VALLERYSTHAL (ESTABLISHED 1836)
Vase
circa 1905
enameled cameo glass, engraved and signed in
gilt 'Vallerysthal'
height 9 3/4in (24.8cm)

\$800 - 1,200

19
**FRANÇOIS-EUGENE ROUSSEAU
(1827-1890)
AND ERNEST-BAPTISTE LEVEILLÉ
(1841-1913)**
Vase
circa 1900
topaz glass with oxide inclusions
height 6 1/4in (16cm)

\$1,500 - 2,000

20
**FRANÇOIS-EUGENE ROUSSEAU
(1827-1890)
AND ERNEST-BAPTISTE LEVEILLÉ
(1841-1913)**
Vase
circa 1890
topaz glass with oxide inclusions
height 8 5/8in (21.8cm)

\$1,800 - 2,500



18



19



20

21
ÉMILE GALLÉ (1846-1904)
Stick Neck Vase
circa 1904
cameo glass, signed 'Gallé' with a star
height 15 1/4in (33.6cm)

\$1,200 - 1,800

22
ÉMILE GALLÉ (1846-1904)
Two Cabinet Vases
circa 1900
cameo glass, signed 'Gallé' in cameo
height 6 1/8in (15.5cm) and 5 5/8in (14.5cm)

\$1,600 - 2,000



21



22



22

23
ÉMILE GALLÉ (1846-1904)
Stick Neck Vase
circa 1905
cameo glass, signed 'Gallé' with star in cameo
height 17 3/4in (45cm)

\$1,500 - 2,500



23

24
ÉMILE GALLÉ (1846-1904)
Stick Neck Vase
circa 1900
cameo glass, signed 'Gallé' in cameo
height 11 3/4in (30cm)

\$1,500 - 2,000



24

25
ÉMILE GALLÉ (1846-1904)
Large Vase
circa 1905
cameo glass, signed 'Gallé' in cameo
height 19 3/8in (49cm)

\$1,500 - 2,000



25

26

GEORGES DESPRET (1862-1952)

Three sculptures

circa 1905

pâte-de-verre, comprising a mask of Napoleon, a bust of a baby and a scarab, each signed 'Despret'

2 1/2in (7cm) x 2 1/8in (5.5cm) to 5in (12.5cm) x 3 3/8in (8.5cm);
height of bust 4 3/4in (12cm)

\$1,000 - 1,500



27

GABRIEL ARGY-ROUSSEAU (1885-1953)

Rosaces Lamp

circa 1923

Bloch-Dermant 23.16, pâte de verre, wrought iron,
signed 'G.ARGY-ROUSSEAU FRANCE' in intaglio
height overall 12in (30.5cm)

\$7,000 - 9,000



27

28

GABRIEL ARGY-ROUSSEAU (1885-1953)

Rosaces Veilleuse

circa 1923

Bloch-Dermant 23.15, pâte de verre, wrought iron,
signed 'G.ARGY-ROUSSEAU FRANCE' in intaglio
height overall 6 3/4in (17.3cm)

\$3,000 - 5,000



28

29
DAUM FRÈRES (FOUNDED 1825)
'Peacock Feather' Vase
circa 1925
acid etched mint green over topaz glass,
signed 'DAUM NANCY FRANCE' with the
cross of Lorraine
height 9 1/2in (cm)

\$2,000 - 3,000



29

30
DAUM FRÈRES (FOUNDED 1825)
Tall Vase
circa 1925
acid etched grey glass, signed
'DAUM NANCY FRANCE' with the
cross of Lorraine
height 15 3/4in (40cm)

\$2,000 - 3,000



30

31
DAUM FRÈRES (FOUNDED 1825)
Vase
circa 1925
acid cut internally decorated glass, signed
'DAUM NANCY FRANCE' with the cross
of Lorraine
height 9 1/2in (23cm)

\$1,200 - 1,800



31

32
DAUM FRÈRES (FOUNDED 1825)
Vase
circa 1925
acid etched glass with foil inclusions, signed
'DAUM NANCY' with the cross of Lorraine
height 9 1/4in (23.5cm)

\$2,500 - 3,500

33
DAUM FRÈRES (FOUNDED 1825)
Tall Vase
circa 1930
blown amethyst glass, signed 'DAUM
FRERES FRANCE' with the cross of Lorraine
height 15 1/4in (38.8cm)

\$1,500 - 2,000

34
DAUM FRÈRES (FOUNDED 1825)
Vase
circa 1925
acid cut yellow glass, signed *DAUM NANCY*
FRANCE with the cross of Lorraine
height 10 1/8in (26cm)

\$1,000 - 1,500



32



33



34

35

BRUNO ZACH (1891-1935)

Bat Dancer

circa 1920

patinated bronze, onyx, stamped 'PR. TUCH
309/116 MADE IN AUSTRIA'
height 14 1/2in (37cm); width 9 1/2in (24cm);
diameter of base 4in (10cm)

\$2,000 - 3,000

36

MARCEL-ANDRÉ BOURAINE (1886-1948)

Ballerina

circa 1925

silvered bronze, ebonized wood, signed 'A.
Bouraine'
height 11 3/4in (30cm)

\$3,000 - 5,000

Provenance

Interiors Including Flair: The Fleur Cowles
Collection, Christie's, South Kensington,
November 23, 2016 lot 22

37

JOSEF LORENZL (1892-1950)

Dancer

circa 1925

patinated bronze, marble, signed 'LORENZL'
in the maquette
height 17in (43cm)

\$2,500 - 3,500



35



36



37

38

DEMETRE H. CHIPARUS (1888-1950)

Girl with Satchel

circa 1925

gilt and patinated bronze, onyx base signed

'D.H. Chiparus'

height 7 5/8in (19.3cm)

\$1,000 - 1,500

Provenance

20th Century European Sculpture, Christies,
South Kensington, November 11, 2004, lot 307

39

DEMETRE CHIPARUS (1888-1950)

Dehli Dancer

circa 1925

cold painted, patinated and gilt bronze, onyx base,

signed 'Chiparus' on base

height overall 13 1/4in (33.7cm)

\$4,000 - 6,000

Provenance

Christie's Interiors: Style & Spirit, London
South Kensington, June 3, 2015, lot 644



38



39



40 W

JEAN DUNAND (1877-1942)

Three Panel Screen

circa 1925

lacquered wood, one panel engraved 'JEAN DUNAND'
each panel height 77in (196cm); width 22 (56cm);
depth 1in (2.5cm)

\$18,000 - 25,000

Provenance

Lillian Nassau, New York

Private Collection, California, acquired from the above,
circa 1975

Literature

Félix Marcilhac, 'Jean Dunand: His Life and Works',

Harry N. Abrams, 1991, p.203

model variant illustrated

41 W

FRENCH

Garden Bench

circa 1940

for the Durenne foundry, France, patinated bronze
height 36in (91cm); width 62in (158cm); depth 21in (53.5cm)

\$8,000 - 12,000



41

42

MICHAEL POWOLNY (1871-1954); ATTRIBUTED TO

Three Tango Vases

circa 1914

for Loetz Witwe, opaline glass with blue or black stripes

heights 7 1/4in (18.5cm) and 7 3/4in (20cm)

\$2,000 - 3,000



43

RAYMOND RUYS (1886-1956)

Pair of Four Light Candelabra

circa 1930

for Delheid Frères, Belgium, in the 'African Style', martelé silver, individually numbered sconces and drip pans, marked 'R.Ruys' and '950'

height 6 1/4in (15.8cm); diameter 8 1/3in (20.4cm)

gross weight 75.2oz (2,132gr)

\$12,000 - 18,000

The firm of Ruys, a jewelry shop located in Antwerp, was founded in 1854 by Jacques Ruys. In 1919 he was succeeded by his son Raymond Ruys, and it was under his management that the firm began selling silver objects in the Art Deco style.

Ruys's reputation as a designer reached a peak in 1930 when he produced 48 unique works of art in silver for the Antwerp World's Fair. Each was executed by the silversmith Raymond Delheid, and took inspiration from the exotic discoveries from the Belgian Colonial Empire that occupied central and southern Africa.

This pair of candelabra were originally grouped with the 'Zaire Centerpiece' that is currently part of the collection of the Nelson-Atkins Museum, Kansas City, Missouri (accession no.2002.4)



44

LOETZ

Cytisus Vase
circa 1905
decorated iridescent glass with silver spots,
unmarked
height 4 3/4in (12cm)

\$1,500 - 2,500

45

LOETZ

Titania Vase
circa 1905
cased orange and green glass with silver
overlay
height 4 3/4in (12.2cm)

\$1,500 - 2,500

46

ARCHIBALD KNOX (1864-1933)

Tudric Biscuit Box
circa 1905
model 194 for Liberty & Co., pewter, stamped
'5 TUDRIC 0194', together with a Tudric
pewter bowl stamped 'MADE IN ENGLAND
TUDRIC PEWTER 01277 SOLKBIS'
height of box 4in (10cm); width 5in (13cm);
depth 5in (13cm); height of bowl 2 1/2in
(6.5cm); diameter 11in (28cm)

\$1,500 - 2,000

Literature

Stephen A Martin, 'Archibald Knox', Academy
Editions, 1995, p.83 (biscuit box model
illustrated)



44



45



46



46

47
ALPHONSE LAPAGLIA (1907-1953)
Pair of Modernist Vases
mid 20th century
for International Silver Co., sterling silver,
marked 'INTERNATIONAL STERLING La
Paglia Designed 118'
*height 9 1/4in (23.5cm); diameter 4 1/4in
(11cm)*

\$500 - 700

48
JUST ANDERSEN (1884-1943)
Tazza
1928
sterling silver, stamped with maker's hallmarks
height 6 1/2in (16cm); diameter 10in (26cm)

\$500 - 700

49
CONTINENTAL
Pair of Two Light Candelabra
circa 1930
800 standard silver, unmarked
*height 7 1/2in (19cm); width 11 1/2in
(29.2cm); depth 6 1/4in (15.5cm)*

\$600 - 800



47

48



49



50



51

50 W

SONIA DELAUNAY (1885-1979)

1930 Carpet
for Artcurial, wool, monogrammed signature
'SD'
105in x 127in (266cm x 322cm)

\$5,000 - 8,000

Literature

Véronique Prat, 'Douze ans de l'histoire
d'Artcurial, Artcurial', 1987, for an illustration
of this edition, unpaginated

51 W

JEAN PASCAUD (1903-1996)

Desk
circa 1930
made for the Cité Universitaire, Paris, oak,
leather
*height 29 1/2in (75cm); width 43 1/4in
(110cm); depth 25in (64cm)*

\$2,500 - 3,500

52

DEMETRE H. CHIPARUS (1888-1950)

The Hurdler
circa 1925
patinated metal, signed 'D.H. Chiparus' in the
maquette
*height 18in (46cm); width 17in (43cm); depth
10in (25cm)*

\$2,000 - 3,000



53

CHARLES KORSCHANN (1872-1943)

Figural Vase Allegorical of Sleep

circa 1900

Louchet foundry, patinated and gilt bronze, signed 'CH. KORSCHANN

PARIS', with circular foundry seal

height 18in (46cm)

\$5,000 - 7,000



53

54

LOUIS CHALON (1866-1916)

Conquerir le Monde

circa 1900

gilt and patinated bronze, marble base, signed 'CHALON'

height of bronze 17in (43.2cm)

\$4,000 - 6,000

A similar model was first exhibited at the Paris Salon of 1899



54

55

KARL HAGENAUER (1898-1956)

Pair of Wall Appliques

circa 1930

gilt bronze, frosted glass, each stamped 'HAGENAUER WIEN' and 'WHW', one applique stamped '13', the other applique stamped '14'
height 12in (30cm); width 9 1/2in (24cm); depth 2 3/4in (7.5cm)

\$3,000 - 5,000

Provenance

Kimcherova, New York



55

56 W

OTTO PRUTSCHER (1880-1949); ATTRIBUTED TO

Occasional Table

circa 1915

for Thonet, carved, ebonized wood

height 30 1/4in (77cm); width 40 1/2in (103cm); depth 26 1/2in (67cm)

\$3,000 - 5,000

Provenance

Kimcherova, New York



56

57
ELENA KONIG SCAVINI (1886-1974)

Nella
1932
for Lenci, glazed earthenware, signed in black 'Lenci MADE IN ITALY FV' and with partial Lenci paper label
height 9 1/2in (24cm); width 6in (15cm); depth 7in (18cm)

\$1,000 - 1,500

58
LENCI (FOUNDED 1919)

Reclining Nude
1938
glazed earthenware, signed in black 'Lenci MADE IN ITALY 1-38' and with artist's monogram
height 6 1/2in (16.5cm); length 12in (30cm); depth 6in (15cm)

\$2,000 - 3,000

59
ABELE JACOPI (1882-1957)

Mama Sirena Su Piatto
circa 1935
for Lenci, glazed earthenware, signed in black 'Lenci TORINO ITALY' and initialed 'CA'
height 16 1/2in (42cm); width 8in (20cm); depth 9in (23cm)

\$1,800 - 2,500



57



58



59

60

AUGUSTA SAVAGE (1900-1962)

Lift Every Voice and Sing

1939

22k gold dipped metal, stamped 'Augusta Savage' and 'WORLDS FAIR 1939', with original Augusta Savage Studios paper label on underside

height 11in (28cm); width 9in (23cm); depth 4in (10cm)

\$6,000 - 8,000

Augusta Savage was a sculptor and teacher associated with the Harlem Renaissance. In 1939, Savage was commissioned to make a 16 foot tall plaster sculpture entitled 'Lift Every Voice and Sing' for the New York World's Fair. The large plaster sculpture was destroyed after the event. Fortunately, Augusta Savage Studios created a selection of smaller metal models, such as the offered lot, which were offered as souvenirs of the fair. Very few of these models are known to have come up for auction



60

61

RAYMOND DELAMARRE (1890-1986)

Head

1924

glazed terracotta, incised 'R. Delamarre 1924'

height 13in (33cm); width 7 1/2in (19cm); depth 9in (23cm)

\$1,500 - 2,000



61

62
VETRERIA FRATELLI TOSO
Murrine Vase
circa 1920
murrine glass with applied handles
height 6 1/4in (15.9 cm)

\$1,500 - 2,000

Provenance
Property of a West Coast Collector

63
VITTORIO ZUFFI
Handled Vase
circa 1915
for Fratelli Toso, aventurine cane and floral murrina
height 5 1/4in (13.3 cm)

\$1,500 - 2,000

Provenance
Property of a West Coast Collector

64
SALVIATI AND CO.
Inghistera Vase
circa 1880
glass with aventurine inclusions
height 7 3/4in (19.7 cm)

\$1,500 - 2,000

Provenance
Property of a West Coast Collector



62



63



64

65

ERMANNIO TOSO (1903 - 1973)

Redentore Vase

circa 1957

for Fratelli Toso, millefiori glass in red and green tones,
bearing Fratelli Toso paper label inscribed 'REDENTORE'
and with foil label

height 11 1/4in (28.5cm)

\$4,000 - 6,000

Provenance

Property of a West Coast Collector

66

FRATELLI TOSO; ATTRIBUTED TO

Murrine Vase

murrine glass with grape decoration

height 7in (17cm)

\$1,500 - 2,000

Provenance

Property of a West Coast Collector



65



66

67

FULVIO BIANCONI (1915-1996)

Fasce Orizzontali Bottle

circa 1955

for Venini, model no.4582, royal blue tinted glass, applied with turquoise and white glass (lacking stopper)

height 15 1/2in (39cm)

\$2,000 - 3,000

Provenance

Private California Collection

Literature

Marino Barovier, 'Fulvio Bianconi at Venini', Skira, 2015, p.202



67

68

POLLIO PERELDA (1915-1984)

Vase Cattedrale

circa 1957

Fratelli Toso, blue murrine glass, bearing paper label inscribed 'CATTEDRALE BLU'

height 11in (28cm)

\$4,500 - 5,500

Provenance

Property of a West Coast Collector



68

69

GIANNI VERSACE (1946-1997)

Stiletto Vase

1998

for Venini, blue, red, and orange murrines, signed 'venini Gianni Versace 1998/69

height 10 1/4in (26cm)

\$2,500 - 3,000

Provenance

Property of a West Coast Collector

70

ANZOLO FUGA (1914-1998)

Transennati Vase

circa 1965

for A.V.E.M., designed 1962, glass, murrines

height 13 5/8in (34.5cm)

\$2,000 - 3,000

Provenance

Property of a West Coast Collector

Literature

Rosa Barovier Mentasti, 'Anzolo Fuga: Murano Glass Artist, Designs for A.V.E.M.' Acanthus Press, 2005, p.78



69



70

71

ARCHIMEDE SEGUSO (1909-1999)

Losanghe Vase

circa 1956

produced by Vetreria Archimede Seguso, internally decorated
amethyst glass with white bands

height 10 3/4in (27.4cm)

\$1,000 - 1,500

Provenance

Property of a West Coast Collector

72

ANZOLO FUGA (1914-1998)

Macchie Vase

1950-1959

for A.V.E.M., opalescent glass, red and dark purple details

height 17in (43cm)

\$1,500 - 2,000

Provenance

Property of a West Coast Collector

73

ERCOLE BAROVIER (1889-1974); ATTRIBUTED TO

Gourd Vase

latticino glass

height 10 3/4in (27cm)

\$2,000 - 3,000

Provenance

Property of a West Coast Collector



71

72

73

74

POLLIO PERELDA (1915-1984)

Paggio Vase

circa 1960

for Fratelli Toso, green, red and yellow murrine glass, bearing Fratelli

Toso paper label inscribed 'PAGGIO P/-'

height 11 1/4in (28.5cm)

\$5,000 - 7,000

Provenance

Property of a West Coast Collector

75

ANZOLO FUGA (1914-1998)

Vase, circa 1960

for A.V.E.M., designed 1956, blown glass with gold inclusions and

white and red bands

height 19 1/2in (49cm)

\$3,000 - 5,000

This vase is from a series of abstract forms designed by Anzolo Fuga in 1956; works from the collection were exhibited at the 1958 Venice Biennale.

Provenance

Property of a West Coast Collector

Literature

Rosa Barovier Mentasti, 'Anzolo Fuga Murano Glass Artist: Designs for A.V.E.M.', Acanthus Press, 2005, p.77



74



75

76
ERCOLE BAROVIER (1889-1974)
Eugenio Pitcher and Twin Handled Vase
circa 1955
designed circa 1951, Barovier & Toso, blown
gold glass with applied black decoration
Heights 6in (15.2cm) and 3 3/4in (9.5cm)

\$1,500 - 2,000

Provenance
Property of a West Coast Collector

77
ERCOLE BAROVIER (1889-1974)
Bowl
gilt and blue/green internally decorated glass
height 4in (10cm); diameter 10in (25cm)

\$1,500 - 2,000

Provenance
Property of a West Coast Collector

78
RICHARD MARQUIS (BORN 1945)
Teapot Goblet
1992
Zanfirico glass, signed '© 1992 Marquis'
height 8 1/4in (21cm)

\$1,200 - 1,800

Provenance
Property of a West Coast Collector



76



77



78

79
AURELIANO TOSO (1884-1979);
ATTRIBUTED TO
Zanfirico a Trina Vase
circa 1960
blown glass
height 11 1/4in (28.5cm)

\$1,500 - 2,000

Provenance
Property of a West Coast Collector

80
ANZOLO FUGA (1914-1998)
Bandiere Vase
circa 1955
for A.V.E.M., polychrome glass canes, bearing
A.V.E.M. paper label
height 18in (46cm)

\$2,000 - 3,000

Provenance
Property of a West Coast Collector



79



80

81

VICKE LINDSTRAND (1904-1983) AND SVEN PALMQVIST (1906-1984)

Group of Three Vases

circa 1950

glass, etched respectively 'LC1 Lindstrand Kosta Sweden', 'Orrefors Expo

P349 Sven Palmquist', 'Kosta 4147 V. Lindstrand'

heights 7 1/2in to 12in (19cm to 30cm)

\$800 - 1,200



82

TONY ZUCCHERI (1937-2008)

Spacchi Vase

circa 1985

produced by Barovier e Toso, glass, inscribed

'barovier & toso murano tt sh'

height 11 1/2in (28.5cm)

\$2,000 - 3,000

Provenance

Property of a West Coast Collector

83 W

ERIK HOGLUND (1932-1998)

Table Lamp

circa 1975

manufactured by Boda Glasbruk,

blown and molded green glass

height from base to finial 39in (99cm)

\$800 - 1,200

Provenance

Property of a West Coast Collector



82



83

84

VICKE LINDSTRAND (1904-1983)

Two Vases

Circa 1950

for Orrefors and Kosta, internally decorated and engraved glass, engraved respectively 'Orrefors Lindstrand 1441' and 'Kosta 42166 Lindstrand'

heights 10in and 11in (26cm and 28cm)

\$1,000 - 2,000

85

SIMON GATE (1883-1945)

Vase

circa 1925

for Orrefors, engraved glass, engraved 'Orrefors S Gate 381.262W.'

height 7 1/4in (18.5cm)

\$1,000 - 1,500



84



84



85

86

ALFREDO BARBINI (1912-2007)

Untitled
circa 1950
blown cased glass
height 15in (38cm)

\$1,500 - 2,000

Provenance

Property of a West Coast Collector



86

87

LIVIO SEGUSO (BORN 1930)

Living Flower
cased glass sculpture, titled indistinctly,
signed '10/10 Livio Seguso'
height 12in (30.5cm)

\$2,000 - 3,000

Provenance

Property of a West Coast Collector



87

88

EDWARD HALD (1883-1980)

Two Graal Bowls

circa 1955

for Orrefors, internally decorated glass, each engraved 'Orrefors S. Graal Edward Hald' and numbered respectively '541p' and '5967'
height of circular bowl 4in (10cm); diameter 8in (20cm); height of flared bowl 4in (10cm); width 9 1/2in (24cm); depth 7 1/2in (19cm)

\$1,500 - 2,000



88

89

SIMON GATE (1883-1945)

Vase

circa 1925

for Orrefors, engraved glass, engraved 'Orrefors S Gate 234.27 AD.'
height 8 1/2in (22cm)

\$2,000 - 3,000



89



88

90

EDVIN ÖHRSTRÖM (1906-1994)

Two Graal Vases

circa 1980

for Orrefors, internally decorated glass,
etched 'Orrefors 9057913 Edvin Öhrström Ariel' and 'Gallery 82 Ariel Orrefors
9057813 Edvin Öhrström'

heights 8in and 7in (20cm and 17.8cm)

\$1,500 - 2,000



91

BRUNO GAMBONE (BORN 1936)

Group of Three Vases

circa 1975

glazed stoneware, each painted

'GAMBONE ITALY'

height of tallest 20 3/4in (53cm); width 6 1/2in (16.5cm); depth 2 1/2in (6.5cm)

\$1,500 - 2,500



92

BRUNO GAMBONE (BORN 1936)

Vase

circa 1975

stoneware, painted 'BRUNO GAMBONE'

height 13 1/2in (34.5cm); width 13in (33cm); depth 13in (33cm)

\$2,000 - 3,000



93 W

JACOB KJAER (1896-1957)

UN Chair

circa 1949

teak, leather, with Jacob Kjaer tag and branded 'MADE IN DENMARK'
height 29in (74cm); width 24in (61cm); depth 19in (49cm)

\$1,500 - 2,000

The offered lot was once installed in Case Study House #25, Frank House, Long Beach, California, designed by Killingsworth, Brady, Smith & Associates and furnished by Frank Bros

Provenance

Edward Frank, Long Beach, California

Ron & Nancy Frank, Long Beach, California

Literature

Cara Mullio and Jennifer M. Volland, 'Frank Bros: The Store That Modernized Modern', Black Dog Publishing, 2017, p.179



93

94 W

HANS J. WEGNER (1914-2007)

Rare Music Stool

circa 1957

model AP30, for A.P. Stolen, teak, leather upholstery, underside with enamel tag 'DANISH FURNITURE MAKER'S CONTROL' and with ink stamp 13
height 20 1/2in (52cm); width 27 1/2in (70cm); depth 16in (41cm)

\$3,000 - 5,000

95 W

RÓMULO MACCIÓ (1931-2016)

Humanos

1963

oil on canvas, double signed 'Romano Maccio' on the obverse; titled and signed 'Humanos / Maccio' on the reverse
wooden float frame with narrow profile molding
59 x 78 in (150 x 198cm)

\$20,000 - 30,000

96 W

HANS J. WEGNER (1914-2007)

Extension Dining Table and Eight Chairs

circa 1950

table model AT312, for Andreas Tuck, teak
branded with maker's marks on the underside; chair model CH23, for Carl Hansen & Son, teak, leather
branded with maker's marks on the undersides
height of table 28in (71cm); length 63in (160cm) unextended; depth 39in (99cm); height of chairs 30in (76cm); width 20in (51cm); depth 17in (43cm)

\$2,500 - 3,500



94



95



96

97 W

ROLF RASTAD (1916-1995) AND ADOLF RELING (1913-2006)

Pair of Bambi Armchairs

circa 1955

for Gustav Bahun, teak, cane

height 27in (69cm); width 25.5cm (65cm); depth 25in (64cm)

\$2,000 - 3,000

Provenance

Frank Bros, Long Beach, California

Ron & Nancy Frank, Long Beach, California

98

LARRY RIVERS (1923-2002)

Signing the Big D

1975-76

colored pencil on wove paper, signed and dated in pencil

sheet 17 3/4 x 23 3/4in (45.1 x 60.3cm)

\$2,000 - 3,000

Provenance

Marlborough Gallery, New York

Hokin Gallery, Palm Beach

99 W

ROGER CAPRON (1922-2006)

La Gorgonne

2001

enameled earthenware, metal base, signed in black 'R. CAPRON';

together with a copy of the original invoice from Hammer Galleries, New York

height 23 1/2in (60cm), width 17in (43cm), depth 7in (17.5cm)

\$4,000 - 6,000

Provenance

Hammer Galleries, New York

Acquired from the above in 2002

100 W

PAUL MCCOBB (1917-1969)

Coffee Table

circa 1950

for Calvin, walnut, brass, marble, with brass Calvin tag

in drawer

height 15in (38cm); width 72in (183cm); depth 24in (61cm)

\$1,500 - 2,000





98



99



100

101 W

ITALIAN

Modernist Floor Lamp

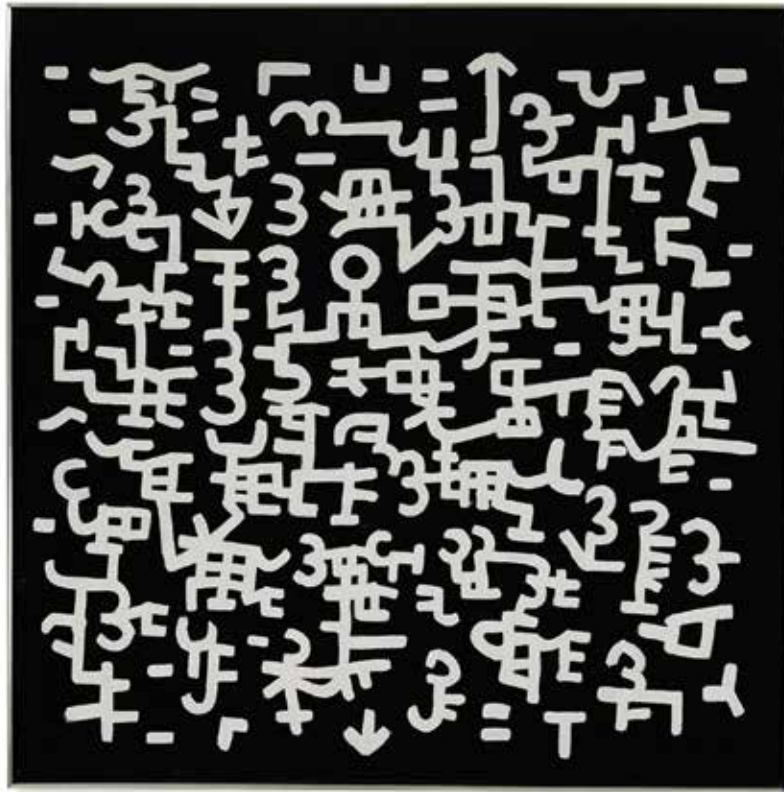
circa 1950

enameled metal, brass, frosted glass

height 70in (178cm); width 17in (43cm); depth 17in (43cm)

\$2,000 - 3,000





102

102 W

ULFERT WILKE (1907-1987)

Untitled

circa 1967

oil on canvas

signed with artist's cypher and 'A 67'

height 48in (122cm); width 48in (122cm) sight

\$3,000 - 5,000

Provenance

Ulfert Wilke

S Pearson Auerbach, MD

Thence by descent to present owner

Literature

Gerald Nordland, 'Ulfert Wilke: A Retrospective', Utah Museum of Fine Arts, 1983, p.28 for a 1967 image of the artist's studio with similar calligraphic paintings

103 W

HANS J. WEGNER (1914-2007)

Ox Chair

circa 1960

for A.P. Stolen, leather upholstery, chromed steel

height 34 3/4in (88cm); width 37 1/2in (95cm); depth 32 1/4in (81cm)

\$4,000 - 6,000

Provenance

Denmark 50, Los Angeles, California



103

104

SAUL STEINBERG (1914-1999)

Untitled

1943

ink drawing on paper, signed 'STEINBERG', inscribed 'To Stan with consideration' and dated 'June 1943'

length 19 1/2in (49cm); width 16 3/4in (42cm); depth 1in (2cm)



\$2,000 - 3,000

The present lot was likely drawn during Saul Steinberg's time in the Navy. According to Steinberg's military records for 1943, he visited Ceylon on June 4, Madras on June 7 and then Calcutta on June 11.

Provenance

B.C. Holland Inc., Chicago

105 W

ISAMU NOGUCHI (1904-1988)

Free-form Sofa and Ottoman

designed circa 1950, executed circa 2002

for Vitra, maple, upholstery, polyurethane foam, each with Vitra labels and tags

height of sofa 26 1/2in (67cm); width 118in (299cm); depth 51 1/4in (130cm); height of ottoman 12 1/2in (31cm); width 48in (121cm); depth 28in (71cm)

\$2,500 - 3,500

104



105

106 W

SERGE MOUILLE (1922-1988)

Single-Arm Pivoting Wall Light

circa 1955

designed 1953, for Ateliers Serge Mouille, enameled steel, enameled aluminum, brass

height 12 1/4in (31cm); width 25 5/8in (65cm); depth 7 1/2in (19cm)

\$4,000 - 6,000

Provenance

Private Collection, Europe

Literature

Christine and Alan Conour, 'Serge Mouille Luminaires', Le Regard d'Alan Editions, Paris, 1993, Unpaginated

106



107

ISAMU NOGUCHI (1904-1988)

Measured Time Clock and Kitchen Timer

designed circa 1932

bakelite, glass, with original cardboard box, dial marked 'MEASURED TIME' and 'MEASURED TIME INC LA PORTE INDIANA', with

'MEASURED TIME INC.' metal tag on the reverse

height 6in (15cm); width 5 1/2in (14cm); 3in (7.8cm)

\$3,000 - 4,000

107





108

108

TRUDE GUERMONTPREZ (1910-1976)

Reflection

1960s

woven textile, metal hanging rod, titled 'REFLECTION' on verso
overall length 31in (79cm); width 30 1/2in (78cm)

\$1,500 - 2,500

Trude Guermontprez was associated with the weaving programs at Black Mountain College, Pond Farm Workshops and the California College of Arts and Crafts. Guermontprez's work contributed to what we know today as California Modernism.

109 W

DANISH MODERN

Pair of Armchairs

circa 1955

teak, upholstery, each branded 'Morredi DANMARK'

height 26 1/2in (67.5cm); width 30in (76.2cm); depth 27in (69cm)

\$1,500 - 2,500

Provenance

Frank Bros, Long Beach, California

Ron & Nancy Frank, Long Beach, California

Literature

Cara Mullio and Jennifer M. Volland, 'Frank Bros: The Store That Modernized Modern', Black Dog Publishing, 2017, p.250



109

110

ITALIAN MODERN

Pair of Wall Lights

circa 1950

brass, enameled metal, frosted glass

height 19 3/4in (50cm), width 12in (30cm)

\$2,500 - 3,500

111 W

FRANK KYLE (ACTIVE CIRCA 1950)

Credenza

circa 1950

with Pepe Mendoza pulls, bronze, enamel, mahogany

pulls stamped with Mendoza marks

height 35in (89cm); width 82.5in (221cm); depth 22in (56cm)

\$2,000 - 3,000



112

KAY BOJESEN (1886-1958)

Collection of Toy Animals

circa 1955

teak, oak, rope, including four lions, three monkeys, a bear and an owl together with five Danish toy mice

two monkeys stamped 'Kay Bojesen Denmark Copyright', two mice stamped 'Made in Denmark'

height of lions range from 5 to 6in (13-15cm); width 4in (10cm); length 7in (18cm); height of monkeys 8in (20cm); width 6in (15cm); depth 2in (5cm); height of bear 5in (13cm); width 2 1/2in (6.5cm); depth 2 1/2in (6.5cm); height of owl 2 1/2in (6.5cm); width 1 1/2in (4cm); height of mice 1in (2cm); width 2 1/2in (6.5cm); depth 2 1/2in (6.5cm)

Provenance

Frank Bros, Long Beach, California

Ron & Nancy Frank, Long Beach, California

Literature

Cara Mullio and Jennifer M. Volland, 'Frank Bros: The Store That Modernized Modern', Black Dog Publishing, 2017, p.30

\$1,200 - 1,800



113 W

CHARLES (1907-1978) & RAY EAMES (1912-1988)

670 Lounge Chair and 671 Ottoman

1970-1990

designed 1956, for Herman Miller, laminated plywood, leather,
aluminum, with black Herman Miller label

height of chair 32 3/4in (83cm); width 32in (81cm); depth 34in (86cm);

*height of ottoman 16in (40cm); width 25 3/4in (65cm); depth 22in
(55cm)*

\$1,000 - 1,500



114

HANS J. WEGNER (1914-2007)

Four 'The Chairs'

circa 1971

model JH501, Johannes Hansen for Knoll International, oak, upholstery, each branded 'JOHANNES HANSEN COPENHAGEN DENMARK JH' and with Knoll International paper labels
height 30 3/8in (77cm); width 24 3/4in (63cm); depth 18 1/2in (47cm)

\$2,500 - 3,500

The designer Charles Pfister contracted Knoll International to design a new office system for the Weyerhaeuser Headquarters in 1971. The present lot formed part of Pfister's original interior scheme.

Provenance

Weyerhaeuser Company Collection

Literature

Christian Holmstedt Olesen, 'Hans J. Wegner: Just One Good Chair', Hatje Cantz, 2014, p.135



115 W

HANS J. WEGNER (1914-2007)

The Chair

circa 1949

for Johannes Hansen, teak, cane

branded Johannes Hansen mark on underside

height 30in (76cm); width 25in (64cm); depth 24in (61cm)

\$1,200 - 1,800

The offered lot was once installed in Case Study House #25, Frank House, Long Beach, California, designed by Killingsworth, Brady, Smith & Associates and furnished by Frank Bros

Provenance

Edward Frank, Long Beach, California

Ron & Nancy Frank, Long Beach, California

Literature

Cara Mullio and Jennifer M. Volland, 'Frank Bros: The Store That Modernized Modern', Black Dog Publishing, 2017, p.179



115

116 W

HANS J. WEGNER (1914-2007)

Three 'The Chairs'

circa 1971

model JH501, Johannes Hansen for Knoll International, oak,

upholstery, each branded 'JOHANNES HANSEN COPENHAGEN

DENMARK JH' and with Knoll International paper labels

height 30 3/8in (77cm); width 24 3/4in (63cm); depth 18 1/2in (47cm)

\$2,000 - 3,000

The designer Charles Pfister contracted Knoll International to design a new office system for the Weyerhaeuser Headquarters in 1971. The present lot formed part of Pfister's original interior scheme.

Provenance

Weyerhaeuser Company Collection

Literature

Christian Holmstedt Olesen, 'Hans J. Wegner: Just One Good Chair', Hatje Cantz, 2014, p.135



116



117 W

FRENCH MODERN

Pair of Floor Lamps

circa 1960

leather, brass, steel, paper

height 69 1/2in (176.5cm); diameter 12in (30.5cm)

\$4,000 - 6,000

118 W

MAX ERNST (1891-1976)

Comète Wall Hanging

1950

short pile wool, signed in the weave

length 83in (210cm); width 62in (157cm)

\$1,500 - 2,000

119 W

**ROBERT GUILLERME (1913-1990) AND
JACQUES CHAMBRON (1914-2001)**

Desk

circa 1960

for Votre Maison, oak, stone

height 29in (73cm); width 74in (187cm);
depth 59in (149cm)

\$2,500 - 3,500

117



118



119

120 W

OLE WANSCHER (1903-1985); ATTRIBUTED TO

Set of Eight Armchairs

circa 1950

mahogany, leather, brass nail heads, each armchair with metal tag from General Motors International, Denmark

height 40in (101cm); width 25 1/8in (63cm); depth 23in (58cm)

\$1,500 - 2,500

Provenance

General Motors International, Denmark



121

FRENCH

Pair of Two Arm Wall Sconces

1940s

nickel plated bronze, mirrored glass

height 15 1/2in (39cm); width 10 1/4in (26cm);
depth 5 1/2in (13cm)

\$1,500 - 2,000

122 W

ARTURO PANI (1915-1981); ATTRIBUTED TO

Coffee Table

1950s

brass, wrought iron, reverse decorated glass

height 14 1/2in (37cm); width 63 1/8in
(160.2cm); depth 27 1/4in (69.5cm)

\$2,500 - 3,500

Provenance

Custom Commission, Mexico City



123

W.A.S. BENSON (1854-1924)

Pair of Sconces

circa 1900

brass, copper, one stamped 'W.A.S. Benson'

length 16 3/4in (42cm); diameter of shade 5 3/4in (14cm)



\$2,500 - 3,500

Provenance

Private Collection

'Interiors', Christie's, New York, June 30 - July 1, 2009

124 W

MAISON BAGUES

Coffee Table

circa 1950

brass, carved and polychromed wood, glass

height 17in (43.2cm); width 36in (92cm); depth 19in (49cm)



\$2,000 - 3,000

125 W

ANTHONY REDMILE (ACTIVE 1960S/1970S)

Octagonal Mirror

circa 1975

shell, mirrored glass

height 50 1/2in (128cm); width 34 1/2in (87.5cm)

123

\$1,500 - 2,000

Provenance

Private Collection, Santa Barbara, California



124

126 W

JOHN DICKINSON (1920-1982)

Custom Klismos Chair

circa 1970

white washed oak, Naugahyde, and wool

height 36 1/2in (92cm); length 19in (48cm); depth of chair 17in (43cm)

\$1,000 - 1,500

Provenance

Dr. Leo and Marlys Keoshian, Palo Alto, California

Literature

Erica Brown, 'Precision with Playfulness', New York Times Magazine, July 8, 1979, p.53 for an illustration of chair in-situ

127 W

T.H. ROBSJOHN-GIBBINGS (1905-1976)

Console Table

circa 1961

for Baker, walnut, brass oval Baker tag

height 30in (66cm); width 60in (153cm); depth 20in (51cm)

\$2,000 - 3,000



125



126



127



128

128

ILYA BOLOTOWSKY (1907-1981)

Small Column, Blue, Yellow and Red
1968

acrylic on wood, signed and dated in black 'Ilya Bolotowsky 68',
inscribed 'I.B.-413' and titled in pencil 'Small Column Blue, Yellow,
Red'

height 22in (56cm); width 3in (7.9cm); depth 3in (7.9cm)

\$3,000 - 5,000

Provenance

Beth Urdang Fine Art, Chicago

129

ILYA BOLOTOWSKY (1907-1981)

Untitled

circa 1965

acrylic on wood, signed in black 'Ilya Bolotowsky'

height 13 3/4in (35cm); width 2in (5cm); depth 2in (5cm)

\$4,000 - 6,000

Provenance

Albert Goldman Gallery, Florida

Eric Collins, Delaware

Beth Urdang Fine Art, Chicago

130 W

ALEXANDER CALDER (1898-1976)

Balloons Tapestry

1974

for Bon Art, maguey fiber, woven 'AC 74' and tagged 'BON ART
WOVEN ART HAND CRAFTS OF MAGUEY FIBER MADE IN
GUATEMALA' on the verso

84 1/4in x 55 1/2in (214cm x 141cm)

\$3,000 - 5,000

131 W

DANISH MODERN

Extension Dining Table

1950s

teak, brass tag 'ILLUMS BOLIGHUS KOBENHAVN', with two leaves;
together with a set of six Hans J. Wegner W2 dining chairs for C.M.

Madsens, oak, stamped 'C.M. MADSENS FABRIKER HAARBY
DANMARK MADE IN DENMARK DESIGN: HANS J. WEGNER'

height of table 28 1/2in (72.5cm); diameter without leaves 46 1/2in
(118cm); height of chairs 29 3/4in (75cm); width 21 3/4in (55cm);
depth 17 1/4in (43cm) (9)

\$3,000 - 5,000



129



130



131

132

MARK TOBEY (1890-1976)

Untitled

1954

tempera on paper, signed and dated 'Tobey 54'
6 1/4 x 5 in; (16 x 13cm)

\$4,000 - 6,000

133 W

PIERRE GUARICHE (1926-1995); ATTRIBUTED TO

Pair of Armchairs

1950s

manufactured by Free Span for Steiner, blond wood, upholstery
height 33in (83cm); width 22in (55cm); depth 26in (66cm)

\$2,000 - 3,000



132

134 W

HANS J. WEGNER (1914-2007)

Coffee Table

circa 1950

for Andreas Tuck, teak, steel, underside branded 'ANDR.TUCK
DESIGN.HANS J. WEGNER MADE IN DENMARK' and Danish control
mark
height 15in (38cm); diameter of table 43 1/4in (109cm)

\$1,000 - 1,500

135

JACQUES ADNET (1901-1984)

Mirror

circa 1950

for Hermès, leather, brass, glass
diameter 18in (45cm); length 25in (64cm)

\$1,500 - 2,000

136 W

PIERRE JEANNERET (1896-1967)

Pair of Scissor Chairs

circa 1950

for Knoll Associates, birch, chrome plated steel, upholstery
height 29 1/4in (74cm); width 22 5/8in (57cm); depth 30 1/2in (77cm)

\$3,000 - 5,000

Provenance

Collection of Drs. John and Karen Woodward

Literature

Eric Larrabee and Massimo Vignelli, 'Knoll Design', Abrams, New York,
1990, p.42



133



134



135



136

137 W

PIERRE JEANNERET (1896-1967)

Pair of Office Armchairs

circa 1955

teak, cane, upholstery, one chair with hand applied and painted stencil mark 'MJ'

height 30 1/2in (78cm); width 20in (51cm); depth 19in (49cm)

\$5,000 - 7,000

Provenance

Chandigarh, India

Private Collection, New York

Literature

Eric Touchaleaume, Gerald Moreau, 'Le Corbusier, Pierre Jeanneret, The Indian Adventure, Design-Art-Architecture', Editions Eric Touchaleaume / Galerie 54, 2010, p.563

Patrick Seguin, 'Le Corbusier, Pierre Jeanneret, Chandigarh, India, 1951-66', Galerie Patrick Seguin, 2014, p.283

138 W

PIERRE JEANNERET (1896-1967)

Pair of Office Armchairs

circa 1955

teak, cane, upholstery, both with hand applied and painted stencil marks 'T.D.O.'

height 31in (79cm); width 19 1/2in (50cm); depth 19in (49cm)

\$5,000 - 7,000

Provenance

Chandigarh, India

Private Collection, New York

Literature

Eric Touchaleaume, Gerald Moreau, 'Le Corbusier, Pierre Jeanneret, The Indian Adventure, Design-Art-Architecture', Editions Eric Touchaleaume / Galerie 54, 2010, p.563

Patrick Seguin, 'Le Corbusier, Pierre Jeanneret, Chandigarh, India, 1951-66', Galerie Patrick Seguin, 2014, p.283



137

139 W

PIERRE JEANNERET (1896-1967)

Coffee Table

circa 1960

teak, glass

height 15 1/2in (39.5cm); width 50 1/4in (128cm); depth 18in (46cm)

\$6,000 - 8,000

Provenance

Chandigarh, India

Private Collection, New York

Literature

Eric Touchaleaume, Gerald Moreau, 'Le Corbusier, Pierre Jeanneret, The Indian Adventure, Design-Art-Architecture', Editions Eric Touchaleaume / Galerie 54, 2010, p.589

Patrick Seguin, 'Le Corbusier, Pierre Jeanneret, Chandigarh, India, 1951-66', Galerie Patrick Seguin, 2014, p.287





140

140 W

PIERRE JEANNERET (1896-1967)

Three Panel Room Screen

circa 1957

teak, fabric

height 67in (170.5cm); width 20in (51cm);

depth 1 1/2in (4cm)

\$4,000 - 6,000

141 W

PIERRE JEANNERET (1896-1967)

Pair of Stools

circa 1965

teak, steel, one stool with hand applied and

painted stencil marks 'PH LAB1'

height 24in (61cm); diameter 13in (33cm)

\$2,500 - 3,500

Provenance

Punjab University, Chandigarh, India

Private Collection, New York

Literature

Eric Touchaleaume, Gerald Moreau, 'Le

Corbusier, Pierre Jeanneret, The Indian

Adventure, Design-Art-Architecture', Editions

Eric Touchaleaume / Galerie 54, 2010, p.560

142 W

PIERRE JEANNERET (1896-1967)

Three Panel Room Screen

circa 1957

teak, fabric, with hand applied and painted

stencil marks 'CL.P.53'

height 67in (170.5cm); width 20in (51cm);

depth 1 1/2in (4cm)

\$4,000 - 6,000

Provenance

Chandigarh, India

Private Collection, New York

Literature

Eric Touchaleaume, Gerald Moreau, 'Le

Corbusier, Pierre Jeanneret, The Indian

Adventure, Design-Art-Architecture', Editions

Eric Touchaleaume / Galerie 54, 2010, p.597

Patrick Seguin, 'Le Corbusier, Pierre

Jeanneret, Chandigarh, India, 1951-66',

Galerie Patrick Seguin, 2014, p.136



141

143 W

PIERRE JEANNERET (1896-1967)

Pair of Easy Armchairs

circa 1955

teak, cane, upholstery

height 28 1/4in (72cm); width 19in (49cm),

depth 20in (51cm)

\$8,000 - 12,000

Provenance

Chandigarh, India

Private Collection, New York

Literature

Eric Touchaleaume, Gerald Moreau, 'Le Corbusier, Pierre Jeanneret, The Indian Adventure, Design-Art-Architecture', Editions Eric Touchaleaume / Galerie 54, 2010, p.563

Patrick Seguin, 'Le Corbusier, Pierre Jeanneret, Chandigarh, India, 1951-66', Galerie Patrick Seguin, 2014, p.283



142



143

144 W

ARP (FOUNDED 1954); ATTRIBUTED TO

Pair of Open Armchairs

circa 1955

for Steiner, ebonized wood, leather

height 36in (91.5cm); width 27 1/2in (70cm), depth 28in (71cm)

\$2,000 - 3,000

ARP (Atelier de Recherches Plastiques) was a trio of young French designers, Pierre Guariche, Michel Mortier and Joseph André Motte. ARP created new, exciting forms, which received numerous awards at design competitions during the mid-1950s

145 W

PAUL MCCOBB (1917-1969)

Coffee Table

circa 1950

walnut, brass

height 16in (41cm); width 66in (168cm); depth 32in (81.5cm)

\$1,500 - 2,000



144



145

146 W

MEXICAN

Pair of Modernist Lounge Chairs

circa 1955

mahogany, aluminum, tanned leather, faux leather

heights 28 3/4in (73cm); widths 31 5/8in (80cm); depths 26 1/4in (66cm)

\$1,200 - 1,800

147

SATORU HOSHINO (BORN 1945)

Spring Snow No. 2

2007

glazed stoneware

19 1/2in x 18 1/4in (50cm x 46cm)

\$4,000 - 6,000

Provenance

Frank Lloyd Gallery, Santa Monica

148 W

ARTURO PANI (1915-1981);

ATTRIBUTED TO

Coffee Table

circa 1960

travertine, mahogany, brass

height 10 1/4in (26cm); width 43in (109cm); depth 42 3/4in (108cm)

\$1,200 - 1,800

Provenance

Private Collection, Mexico City

146



147



148

146



149

GEORGE SAKIER (1897-1988)

Group of Six Vases and a Covered Jar
circa 1930

for Fostoria Glass Company, mold blown glass, two bearing Fostoria paper labels
heights 5 3/4in (14.5cm) to 12 7/8in (32.5cm)

\$3,000 - 5,000

Two vases from the offered lot were from the collection of Barbara Adt.
Adt co-authored 'Fostoria Designer George Sakier' with Leslie Pina



150 W

CARLO NASON (BORN 1935)

Pair of 'Lotus' Table Lamps

designed 1960s

for Mazzega, opalescent glass, patinated metal

height 15in (38cm); diameter 17in (43.2cm)

\$3,000 - 5,000



151 W

HERBERT BAYER (1900-1985)

Concentration

1969

signed, dated, numbered on the overlap; titled on the stretcher bar
50 x 50in (127 x 127cm)

\$6,000 - 8,000

Provenance

Marlborough Gallery, Montreal

152 W

BRUNO MATHSSON

Jetson Lounge Chair

circa 1969

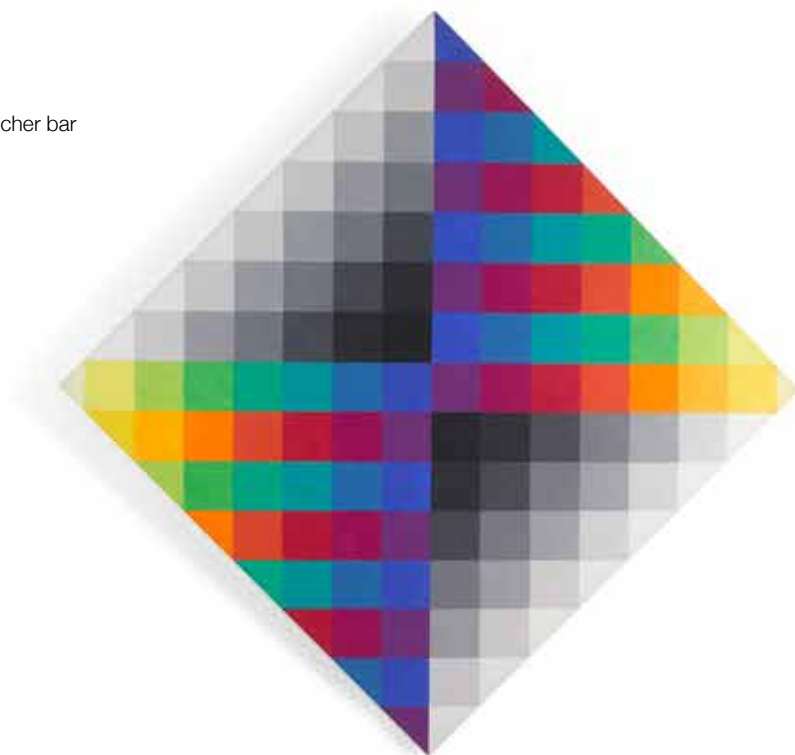
for Dux, leather, chromed steel

height 38in (97cm); width 25in (64cm); depth 36in (91cm)

\$1,000 - 1,500

Provenance

Private Collection, California



151



152



153

153 W

CHARLES HOLLIS JONES (BORN 1945)

Triple Arch Table

1970

from Hollis Jones' Arch line, model CHJ 486, acrylic, etched 'Charles Hollis Jones' and '1970'
height 28 1/2in (72cm); diameter of table top 48in (121cm)

\$2,500 - 3,500

Provenance

Jo Lauria, Los Angeles

Literature

Todd Merrill and Julie V. Iovine, 'Modern Americana: Studio Furniture from High Craft to High Glam', Rizzoli, 2008, p. 149 for an illustration of a similar table by Charles Hollis Jones in-situ

154 W

BRUNO MATHSSON

Pair of Jetson Lounge chairs

circa 1969

for Dux, leather, chromed steel
one chair marked 'Bruno Mathsson' and 'Made by Dux'
height 38in (97cm); width 25in (64cm); depth 36in (91cm)

\$2,000 - 3,000

Provenance

Private Collection, California



154



155

155 W
JULES OLITSKI (1922-2007)

Jehovah Cover 3
1975
acrylic on canvas, signed, dated twice, titled and inscribed 'Jules Olitski / '75 / "Jehovah Cover 3" / 75/19/3' (on the reverse)
70 x 30 1/4 in. (177.8 x 76.8 cm)

\$10,000 - 15,000

156 W
JOHN DICKINSON (1920-1982)

Custom Dining Table
circa 1970
carved and lacquered bleached oak
height 30in (76cm); length 83 1/2in (212cm);
width 41 3/4in (106cm)

\$2,500 - 3,500

Provenance

Dr. Leo and Marlys Keoshian, Palo Alto, California

Literature

'Una Voglia Di Bianco: Dalla California', Casa Vogue, April 1976, p.123 for an illustration of dining table in-situ
Erica Brown, 'Precision with Playfulness', New York Times Magazine, July 8, 1979, p.53 for an illustration dining table in-situ

157 W
JOHN DICKINSON (1920-1982)

Set of Six Custom Armchairs
after a circa 1935 design by Hammond Kroll, these circa 1970
carved and bleached oak with canvas pillows
height 32 1/4in (81cm); width 23 1/2in (59cm);
depth 19in (48cm)

\$4,000 - 6,000

Provenance

Dr. Leo and Marlys Keoshian, Palo Alto, California

Literature

'Una Voglia Di Bianco: Dalla California', Casa Vogue, April 1976, p.121 for an illustration of chairs in-situ
Erica Brown, 'Precision with Playfulness', New York Times Magazine, July 8, 1979, p.53 for an illustration of chairs in-situ



157

156

158 W

JULES OLITSKI (1922-2007)

Special Language - 1

1978

acrylic on canvas, signed, titled, dated three times and inscribed 'Jules Olitski / '78 / Special / Special Language - 1 / 1978 / 78-10-1' (on the reverse); titled again (on the stretcher)
23 1/2 x 70 in. (59.7 x 177.8 cm)

\$10,000 - 15,000

Provenance

M. Knoedler & Co., Inc., New York.

159 W

JOHN DICKINSON (1920-1982)

Custom Parsons Style Sectional Sofa

circa 1970

canvas and faux leather
height 30in (76cm); length 114in (289cm);
depth of chaise 88in (223cm)

\$2,000 - 3,000

Provenance

Dr. Leo and Marlys Keoshian, Palo Alto, California

Literature

'Una Voglia Di Bianco: Dalla California', Casa Vogue, April 1976, p.118 for an illustration of sofa in-situ
Erica Brown, 'Precision with Playfulness', New York Times Magazine, July 8, 1979, p.53 for an illustration of sofa in-situ

160 W

JOHN DICKINSON (1920-1982)

Pair of Custom Cube Ottomans

circa 1970

leather upholstery
height 17in (43cm); length 17in (43cm); depth 17in (43cm)

\$1,200 - 1,800

Provenance

Dr. Leo and Marlys Keoshian, Palo Alto, California

Literature

Erica Brown, 'Precision with Playfulness', New York Times Magazine, July 8, 1979, p.53 for an illustration of ottomans in-situ



158



159

160

161 W

JOHN DICKINSON (1920-1982)

Pair of Custom Light Panels

circa 1970

lacquered wood

height 47 1/2in (120cm); width 30in (76cm); depth 5in (12cm)

\$2,000 - 3,000

Provenance

Dr. Leo and Marlys Keoshian, Palo Alto, California

Literature

'Una Voglia Di Bianco: Dalla California', Casa Vogue, April 1976, p.120-121 for an illustration of light panels in-situ

162 W

JOHN DICKINSON (1920-1982)

Custom Quarry Edge Console Table

circa 1970

marble

height 30 1/4in (76cm); length 36in (91cm); depth 16in (40cm)

\$2,500 - 3,500

Provenance

Dr. Leo and Marlys Keoshian, Palo Alto, California

Literature

'Una Voglia Di Bianco: Dalla California', Casa Vogue, April 1976, p.123 for an illustration of console table in-situ
Erica Brown, 'Precision with Playfulness', New York Times Magazine, July 8, 1979, p.53 for an illustration of console table in-situ

163 W

JOHN DICKINSON (1920-1982)

Custom Quarry Edge Console Table

circa 1970

marble

height 30 1/4in (76cm); length 36in (91cm); depth 16in (40cm)

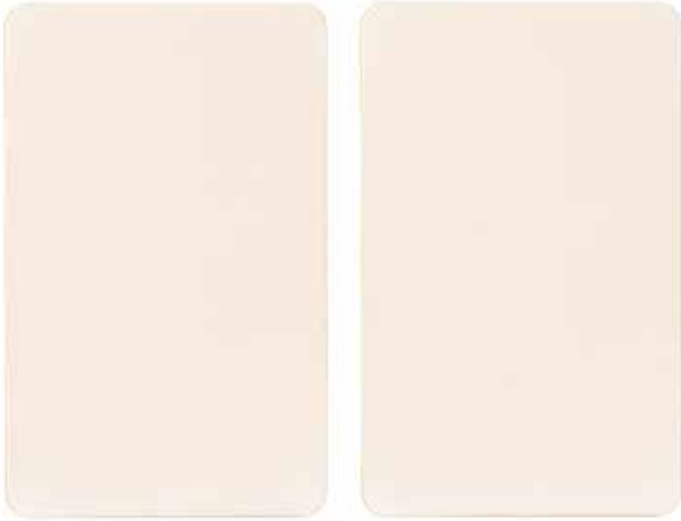
\$2,500 - 3,500

Provenance

Dr. Leo and Marlys Keoshian, Palo Alto, California

Literature

'Una Voglia Di Bianco: Dalla California', Casa Vogue, April 1976, p.123 for an illustration of console table in-situ
Erica Brown, 'Precision with Playfulness', New York Times Magazine, July 8, 1979, p.53 for an illustration of console table in-situ



161

161



162



163

164

MARK TOBEY (1890-1976)

Untitled

1967

tempera on paper, signed and dated 'Tobey 1967'

5 3/4 x 3 3/4 in; (15 x 9.5cm)

\$3,000 - 5,000

165 W

JOHN DICKINSON (1920-1982)

Custom Side Table

circa 1970

marble

height 16in (40cm); length 17in (43cm); depth 11in (27cm)

\$3,000 - 5,000

Provenance

Dr. Leo and Martys Keoshian, Palo Alto, California

166 W

JOHN DICKINSON (1920-1982)

African Table

1970s

painted plaster

inscribed 'John Dickinson San Francisco' in script

height 20 1/4in (51.5cm); diameter 16 1/2in (32cm)

\$5,000 - 8,000

Literature

Todd Merrill and Julie V. Iovine, 'Modern Americana: Studio Furniture from High Craft to High Glam', Rizzoli, 2008, p.232



164



165



166

167 W

PAUL EVANS (1931-1987)

Wall Mounted Cityscape Console

1975

for Directional USA, walnut
with single drawer opening to reveal a fitted interior
height 8 1/8in (20cm); width 48 1/16in (122cm); depth 14 1/16in (35cm)

\$1,500 - 2,000

168 W

PAUL EVANS (1931-1987)

Cityscape Dining Set

circa 1975

for Directional USA, burlled walnut, upholstery
comprising a dining table with two leaves, six side chairs, two
armchairs

table tagged 'Paul Evans'

height of dining table 29 1/2in (74cm); width without leaves 64 1/8in (162cm); depth 38in (96cm); height of armchair 36 15/16in (93cm); width 23 3/4in (60cm); depth 21in (53cm); height of side chair 36 1/4in (92cm); width 19 1/8in (48cm); depth 23 1/2in (59cm)

\$2,000 - 3,000





168

169

PAUL JENKINS (1923-2012)

Phenomena Dove Tail Gold
watercolor on paper, signed in black 'Paul Jenkins'
22 x 30in (56 x 76cm)

\$4,000 - 6,000

Provenance

Carone Gallery, Fort Lauderdale

170 W

MAURICE BAILEY

Executive Desk
circa 1965
for Monteverdi-Young, walnut, chromed steel
height 28 1/4in (71cm); width 98 3/4in (250cm); depth 36in (91cm)

\$2,000 - 3,000



169



170

171 W

PAUL EVANS (1931-1987)

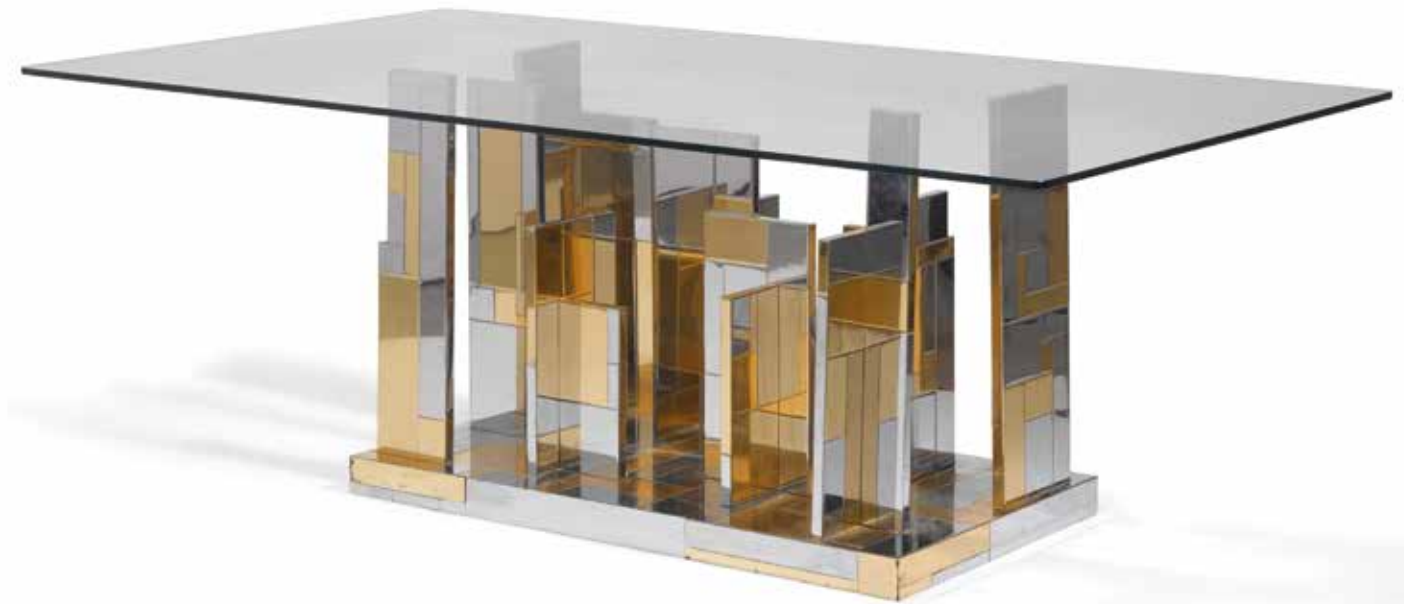
Cityscape Dining Table

circa 1975

chromed metal, brass, glass

height 28in (72cm); width 78in (198cm); depth 42in (107cm)

\$5,000 - 7,000





172

172 W

PAUL JENKINS (1923-2012)

Phenomena Back Lash

watercolor on paper, signed in black 'Paul Jenkins'

30 x 41in (76.2 x 104cm)

\$5,000 - 7,000

Provenance

Carone Gallery, Fort Lauderdale, Florida

173 W

ITALIAN

Coffee Table

1970s

lacquered parchment, brass, walnut stained wood

height 14in (36cm); width 41 1/2in (105.3cm);

depth 27 1/2in (70cm)

\$1,500 - 2,000

174 W

ROBERT GOOSSENS (1927-2016)

Mirror with a Crown of Wheat

1973

ormolu, glass, engraved 'Robert Goossens 1973'

diameter 29in (74cm); depth 4 1/2in (11.5cm)

\$25,000 - 35,000



173



174

175 W

MAN RAY (1890-1976) AND DINO GAVINA (1922-2007)

Le Témoin

1971

for Gavina, acrylic, plywood, faux leather, foam

height 27 1/2in (70cm); width 58in (147.5cm); depth 16 1/2in (43cm)

\$2,000 - 3,000



176 W

MARC NEWSON (BORN 1963)

Pair of Embryo Chairs

circa 1988

for Idee, Neoprene, aluminum

each height 31in (79cm); width 34in (86cm); depth 33in (84cm)

\$7,000 - 9,000

Provenance

Private Collection

Literature

Alice Rawsthorn, 'Marc Newson', Booth-Clibborn Editions, 1999,
fig. 27



177 W

PAUL REED (1919-2015)

Untitled

1965

oil on canvas, signed "#15A 1965 ©Paul Reed 1965 27 x 21"" on reverse, together with an additional unsigned Paul Reed oil on canvas painting

the first 27in x 21 in (68.8cm x 53.5cm), the other 26 1/2in x 32in (67.3cm x 81.4cm) (2)

\$5,000 - 7,000



177

178 W

PIET HEIN EEK (BORN 1967)

Bench

circa 2012

from the 'Waste' series, reclaimed steel

height 18 3/4in (48cm); width 43 1/4in (110cm); depth 16in (41cm)

\$1,500 - 2,000



177



178

179 W

FABIO NOVEMBRE (BORN 1966)

Org Console/Dining Table

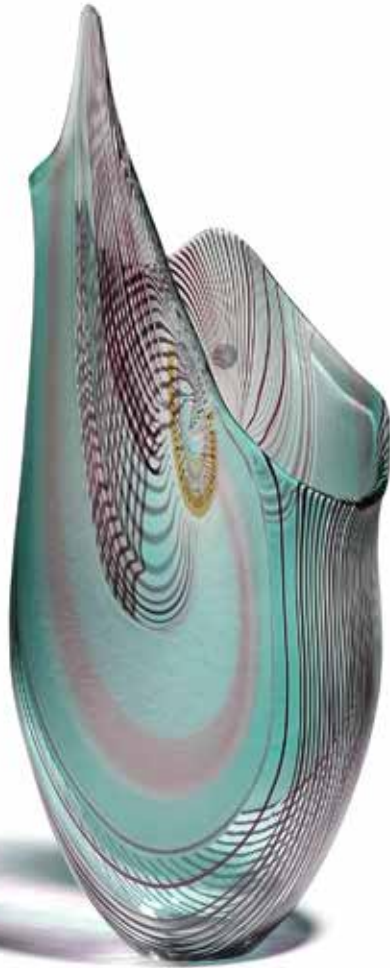
2001

for Cappellini, polypropylene rope, stainless steel, glass

height 28 3/4in (73cm); width 78 3/4in (200cm); depth 39 1/4in (99cm)

\$2,500 - 3,500





180

180 W

AFRO CELOTTO (BORN 1963); ATTRIBUTED TO

Vase

circa 1990

blown glass, internally decorated and wheel carved, foil label 'Murano Made in Italy'

height 21 3/4in (55cm); width 8in (20cm); depth 5in (13cm)

\$2,000 - 3,000

181 W

JOE D'URSO (BORN 1943)

Rolling Low Table

1980

for Cassina, safety glass, chromed steel

height 14 1/4in (36.3cm); width 48in (121cm); depth 48in (121cm)

\$3,000 - 5,000

182

GEORGE ERNSTSON (1945-2011)

Untitled

2005

aluminum, acrylic

17in (43cm) x 17in (43cm) x 2 1/2in (6.5cm)

\$1,200 - 1,800

183

GEORGE ERNSTSON (1945-2011)

Untitled

2005

aluminum, acrylic, metallic fabric

17in (43cm) x 17in (43cm) x 2 1/2in (6.5cm)

\$1,200 - 1,800

184

GEORGE ERNSTSON (1945-2011)

Untitled

2005

aluminum, acrylic

17in (43cm) x 17in (43cm) x 2 1/2in (6.5cm)

\$1,200 - 1,800



181

185 W

GORDON GUILLAUMIER (BORN 1966)

Pair of Cortina Armchairs

designed 2007, executed 2016

for Minotti, leather, chromed metal, with Minotti tag with date of manufacture '09/09/16'

height 28 1/2in (72cm); width 35in (88cm); depth 29in (73cm)

\$1,500 - 2,500



182



183



184



185

186 W

TONY DUQUETTE (1914-1999)

Ghost Snail

design introduced 1974

painting resin

height 20in (50cm); width 15in (38cm); depth 20in (50cm)

\$2,000 - 3,000

The offered lot is from the garden at Tony Duquette's Beverly Hills 'Dawnridge' residence

Literature

Hutton Wilkinson, 'More is More: Tony Duquette' Abrams, p.310-311 for an illustration of a similar Ghost Snail in-situ in Duquette's garden

187 W

TONY DUQUETTE (1914-1999)

Illuminated Ghost Snail

design introduced 1974

resin

height 20in (50cm); width 15in (38cm); depth 20in (50cm)

\$2,500 - 3,500

Literature

Hutton Wilkinson, 'More is More: Tony Duquette' Abrams, p.310-311 for an illustration of a similar Ghost Snail in-situ in Duquette's garden



186



187

188

TONY DUQUETTE (1914-1999)

Pair of Ceiling Lights
design introduced 1960s
cast resin
drop of ceiling light 6in (15cm); diameter 23in (58cm)

\$1,200 - 1,800

189

TONY DUQUETTE (1914-1999)

Pair of Frog Lamps
1990s
heights 27in and 27 1/4in (68cm and 69cm); diameter of shades 18in (45cm)

\$1,200 - 1,800

Provenance

The lamps in the offered lot were originally installed at Tony Duquette's 'Cow Hollow' residence

Literature

Hutton Wilkinson, 'More is More: Tony Duquette' Abrams, p.268 for an illustration of the offered lot in-situ

190

TONY DUQUETTE STUDIOS (FOUNDED 1941)

Pair of Monkey Decorations
circa 2014
painted resin
heights 22 3/4in (57cm); 13in (33cm); depth 14in (35cm)

\$1,000 - 1,500

The inspiration for the offered lot came from an Italian majolica monkey at Tony Duquette's Beverly Hills residence



188



189



190





191 W

TONY DUQUETTE (1914-1999)

Panel of a Soldier

1960s

colored print, resin, coral red painted wood frame

height 74in (187cm); width 25in (63cm); depth 3/4in (1cm)

\$1,000 - 1,500

The offered lot is from Tony Duquette's Beverly Hills residence 'Dawnridge'. Duquette was known for his use of coral red and encasing works of art within resin

192 W

TONY DUQUETTE (1914-1999)

Pair of Garden Stands with Shell Form Jardinieres

design introduced 1970s

painted metal, painted resin

height 29 1/2in (75); width 22in (56cm); depth 13in (33cm)

\$1,500 - 2,000

The offered lot is from Tony Duquette's Beverly Hills residence 'Dawnridge'

191



192

193 W

TONY DUQUETTE (1914-1999)

Pair of Figural Lamps

1940s

painted plaster

height 42in (106cm); widths 14in and 18in (35cm and 45cm);
depth 9 1/2in (24cm)

\$1,500 - 2,000

Provenance

Cobina Wright, Los Angeles, California
Tony Duquette, Beverly Hills, California

Literature

Hutton Wilkinson, 'More is More Tony Duquette', Abrams, 2009, p.232
for an illustration of the offered lot in-situ at the residence of Cobina
Wright, circa 1950



193

194 W

TONY DUQUETTE (1914-1999)

Pair of Urn Form Table Lamps

1952

beadwork, painted metal, wood

height of bases 22 1/2in (57cm); diameter of shades 17 1/2in (44cm)

\$1,500 - 2,000

Provenance

Private commission, Pacific Palisades, California
Tony Duquette, Beverly Hills, California



194

195

TONY DUQUETTE (1914-1999)

Set of Twelve Drinking Cups and Twelve Service Plates

design introduced 1960s

hammered vermeil, each stamped 'TONY DUQUETTE'

height of cups 4 3/4in (12cm); diameter of cups 3 15/16in (9cm);

height of plates 1 1/4in (3cm); diameter of plates 11 3/4in (29cm)

\$1,500 - 2,500

The offered lot is from Tony Duquette's Beverly Hills 'Dawnridge' residence

Literature

Hutton Wilkinson, 'More is More: Tony Duquette' Abrams, p.256-157 for an illustration of similar drinking cups and chargers in-situ at Duquette's San Francisco residence



196 W

TONY DUQUETTE (1914-1999)

Pair of Custom Peacock Chairs

1990s

painted and carved wood

heights 35in (88cm); widths 25in (63cm); depths 26 1/2in (67cm)

\$4,000 - 6,000

The chairs in the offered lot were designed in India as prototypes for Duquette's commission of 'Peacock Thrones' for Dodie Rosekrans' Palazzo Brandolini residence on the Grand Canal in Venice

Literature

Hutton Wilkinson, 'More is More Tony Duquette' Abrams, p.253 for an illustration of a variant pair of chairs

197 W

TONY DUQUETTE (1914-1999)

Chest on Stand

1990s

Metallic thread, cloth upholstered, painted wood

height 25 1/4in (64cm); width 36 1/2in (92cm); depth 24in (60cm)

\$1,200 - 1,800



198 W

TONY DUQUETTE (1914-1999)

Faux Narwhal Tusk on Stand

design introduced early 1970s

resin, black metal

overall height 92in (234cm); width of base 5in (13cm); depth of base 5in (13cm)

\$800 - 1,200

199 W

TONY DUQUETTE (1914-1999)

Pair of Hippocampus Garden Decorations

model designed late 1930s

painted resin

height 28in (72cm); width 14in (36cm); depth 35in (89cm)

\$2,500 - 3,500

The offered lot is from Tony Duquette's Beverly Hills 'Dawnridge' residence



198



199



199

200

TONY DUQUETTE (1914-1999)

Set of Four Shell Form Corner Sconces

circa 1997

resin

heights 8 3/4in (22cm); widths 16in (40cm); depths 16 1/2in (41cm)

\$2,000 - 3,000

The offered lot is from Tony Duquette's Beverly Hills 'Dawnridge' residence

201 W

SYRIE MAUGHAM (1879-1955)

Daybed

1930s

silk upholstery, tassel border

height 27 1/2in (69cm); length 89 1/2in (227cm); width 36in (91cm)

\$2,500 - 3,500

202 W

SYRIE MAUGHAM (1879-1955)

Armchair

1930S

silk upholstery, tassel border

height 32in (81cm); width 30 1/2in (77cm); depth 30 1/2in (77cm)

\$1,200 - 1,800



200 (2 of 4 illustrated)



201



202



203 (one of a pair)

203 W

TONY DUQUETTE (1914-1999)

Pair of Sunburst Mirrors

design introduced 1999

in the manner of Gilbert Poillerat, gilt and painted metal, hubcaps

length 34 1/2in (87cm); width 23 1/2in (59cm); depth 4 1/2in (11cm)

\$2,000 - 3,000

Literature

Hutton Wilkinson, 'More Is More', Abrams Publishers, 2009, p.334

and p.359 for illustrations of similar mirrors in-situ at Duquette's

Beverly Hills 'Dawnridge' residence

204 W

TONY DUQUETTE (1914-1999)

Companion Pair of Side Tables

design introduced late 1990s

agate, black metal

height of largest 18in (46cm); width 16 1/2in (42cm);

depth 15in (38cm)

\$3,500 - 4,500

The offered lot is from Tony Duquette's Beverly Hills

'Dawnridge' residence



204

205 W

TONY DUQUETTE (1914-1999)

Companion Pair of Side Tables
design introduced late 1990s
petrified wood, black metal

height of largest 18in (36cm); width 18 1/2in (47cm); depth 14in (36cm)

\$3,500 - 4,500

The offered lot is from Tony Duquette's Beverly Hills 'Dawnridge' residence



203 (two of a pair)



205



206^Y

TONY DUQUETTE (1914-1999)

Pair of Table Decorations
design introduced 1960s
nautilus shell, faux coral, Murano glass
heights 11 1/2in (29cm); widths 6in (15cm); depth 4 1/4in (10cm)

\$1,800 - 2,500

The offered lot is from Tony Duquette's Beverly Hills 'Dawnridge' residence

207

TONY DUQUETTE (1914-1999)

Pair of Table Decorations
design introduced 1995
ostrich eggs, Murano glass
heights 14 1/4in and 14 1/2in (36cm); diameters 4 1/2in and 5in (11cm and 12cm)

\$1,200 - 1,800

The offered lot is from Tony Duquette's Beverly Hills 'Dawnridge' residence

208

TONY DUQUETTE (1914-1999)

Pair of Votives
design introduced 1995
rock crystal, faux coral
heights 4 1/2in and 5in (11cm and 12cm); widths 5 1/2in and 6in (13cm and 15cm); depths 5 1/4in and 6 1/4in (13cm and 15cm)

\$1,000 - 1,500

The offered lot is from Tony Duquette's Beverly Hills 'Dawnridge' residence

Literature

Hutton Wilkinson, 'More is More: Tony Duquette' Abrams, p.258-259 for images of tablescapes with Duquette votives

209 W

TONY DUQUETTE (AMERICAN, 1914-1999)

Pair of Illuminated Pagodas
design introduced 1965
cast resin, uplights
heights 47 1/8in and 47 1/4in (119cm and 120cm); width 12in (30cm)

\$4,000 - 6,000

The offered lot is from Tony Duquette's Beverly Hills residence 'Dawnridge'

Literature

Hutton Wilkinson, 'More is More: Tony Duquette', Abrams, 2009, p.227 for an illustration of a similar pair of illuminated Tony Duquette pagodas in-situ



206



207

208



206



209

210
**TONY DUQUETTE STUDIOS
(FOUNDED 1941)**

Necklace
circa 2000
amethyst, 18k gold, stamped 'TONY
DUQUETTE 750'
length 20 1/2in (52cm)

\$7,000 - 9,000



210

211
TONY DUQUETTE (1914-1999)

Ring
circa 1995
kunzite, tsavorite, 18k gold, stamped 'TONY
DUQUETTE 18K'
size 7

\$15,000 - 20,000



211

212
TONY DUQUETTE (1914-1999)

Sunburst Bracelet
circa 1998
amethyst, 18k gold, stamped 'TONY
DUQUETTE 18K'
length 8 1/2in (21cm)

\$6,000 - 9,000



212

213

RAY-BAN (FOUNDED 1937)

Aviator Limited Edition Sunglasses
model designed 1938, special edition executed circa 2013
18k gold frame, P3Plus glass lenses, lenses marked 'Ray-
Ban P', certificate of authenticity numbered '0776/1200',
original Ray-Ban fitted box and leaflet, handmade leather
sunglasses case
height 2 1/2in (6.3cm); width 5 1/2in (14cm)

\$1,500 - 2,000

This model was made in an edition of 1200



213

214

TONY DUQUETTE (1914-1999)

Sunburst Table Box
circa 1995
hardstone, gold plate
height 2 3/4in (6cm); width 6 3/4in (17cm); depth 4 3/4in (12cm)

\$7,000 - 9,000

The offered lot is from Tony Duquette's Beverly Hills
'Dawnridge' residence



214

The proceeding lots (215-235) formed part of a custom interior scheme conceived by pioneers of the UK salvage design movement, Mark Brazier-Jones and Tom Dixon for the residence of an art collector in Lugano, Switzerland.

215 W

MARK BRAZIER-JONES (BORN 1956)

Pegasus Chair

designed 1994

patinated bronze, velvet, stamped 'Mark Brazier-Jones 22/100'
height 33in (84cm); width 17in (43cm); depth 21in (54cm)

\$2,000 - 3,000

Literature

Charlotte and Peter Fiell, 'Mark Brazier-Jones',
Fiell Publishing, 2012, p.96-97



215

216 W

MARK BRAZIER-JONES (BORN 1956)

Lunar Chair

designed 1998

patinated bronze, textured velvet

height 28in (71cm); width 25in (64cm); depth 23in (59cm)

\$2,000 - 3,000

Literature

Charlotte and Peter Fiell, 'Mark Brazier-Jones',
Fiell Publishing, 2012, p.108



216

217
MARK BRAZIER-JONES (BORN 1956)
Lotus Burner
designed 1995
aluminum
height 4 1/2in (11.5cm); diameter 6 1/2in (16.5cm)

\$400 - 600

Literature

Charlotte and Peter Fiell, 'Mark Brazier-Jones', Fiell Publishing, 2012, P. 164

218 W
MARK BRAZIER-JONES (BORN 1956)
Pair of Herald Candelabrum
circa 1995
plated steel, bronze
height 22in (56cm); diameter of base 4 1/2in (11.5cm)

\$1,000 - 1,500

219
MARK BRAZIER-JONES (BORN 1956)
Four Guardian Nightlights
circa 1995
patinated bronze
height 4 1/2in (12cm); width 7in (18cm);
depth 3 1/2in (9cm)

\$1,500 - 2,000



220

MARK BRAZIER-JONES (BORN 1956)

Pair of Sera Wall Lights
designed 1998
patinated iron, glass
height 19in (49cm); width 14in (36cm); depth 11in (28cm)

\$2,500 - 3,500

Literature

Charlotte and Peter Fiell, 'Mark Brazier-Jones',
Fiell Publishing, 2012, P. 133



220

221

MARK BRAZIER-JONES (BORN 1956)

Zodiac Candleholder and Astrocharger
circa 1995
patinated metal, frosted and colored glass
height of zodiac candleholder 6in (16.4cm); width 7 1/4in (18.5cm);
depth 7 1/2in (19cm);
height of astrocharger 6 3/4in (17.3cm); width 8 1/4in (21cm); depth
7 7/8in (20cm)

\$1,500 - 2,000



221

222 W

TOM DIXON (BORN 1959)

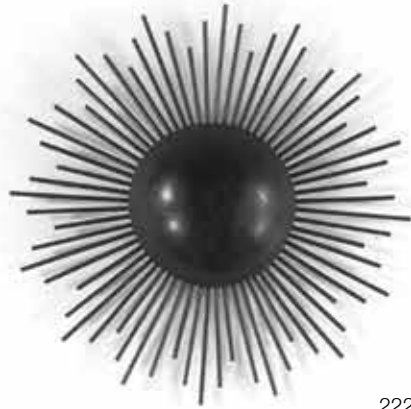
Pair of Wall Lights

circa 1995

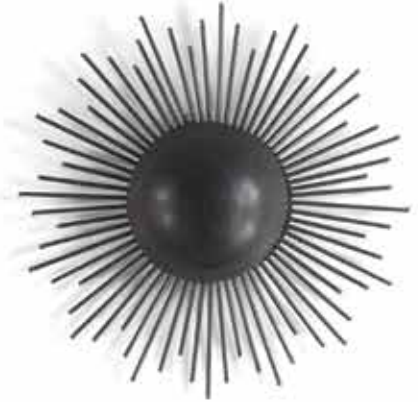
patinated metal

diameter 21in (54cm); depth 3in (7.8cm)

\$2,000 - 3,000



222



223 W

MARK BRAZIER-JONES (BORN 1956)

Alligator Table

circa 1995

torched steel, patinated bronze, leather

height 19 1/2in (50cm); width 65in (165cm); depth 20in (51cm)

\$3,000 - 5,000



223



224

224 W

TOM DIXON (BORN 1959)

Sun Chandelier

circa 1995

patinated and gilt metal

height 13 1/2in (35cm); diameter 47 1/4in (120cm)

\$3,000 - 5,000

225 W

PIERO FORNASETTI (1913-1988)

Capitello Corinzio Chair

designed 1950s, executed circa 1988

lithographic and transfer printed, wood, patinated metal

with paper tag on underside 'FORNASETTI MILANO MADE IN ITALY'

height 36 1/2in (93cm); width 16 1/4in (42cm); depth 17 3/4in (45cm)

\$1,000 - 1,500

226 W

PIERO FORNASETTI (1913-1988)

Sun Table

designed circa 1950

lithographic and transfer printed, wood, patinated metal, with

'Fornasetti Milano' sticker on underside and sticker faintly marked

'SOLE/bianco e nero' on top

height 23 1/4in (59cm); diameter 23 1/2in (60cm)

\$2,500 - 3,500



225



226



227 W

MARK BRAZIER-JONES (BORN 1956)

Pair of Rare Aura Lights

designed circa 1994

gilt metal, neon

each with oval brass tag marked 'MARK BRAZIER-JONES HERTS. ENGLAND' and with studio cypher

height 81 1/2 (207cm); width 13in (33cm); depth 13in (33cm)

\$3,000 - 5,000

Approximately only 10 examples of this design were ever produced.

Bonhams would like to thank Mark Brazier-Jones for his assistance with the cataloguing of the present lot.

228 W

MARK BRAZIER-JONES (BORN 1956)

Unique Chair

circa 1995

chromed steel, dyed cowhide

height 25in (64cm); width 23in (59cm); depth 25in (64cm)

\$3,000 - 5,000



229

MARK BRAZIER-JONES (BORN 1956)

Two Angry Fish Candle Holders

circa 1995

torched steel, glass

height 8 1/2in (22cm); width 8in (20cm); depth 3in (8cm)

\$1,000 - 1,500

Literature

Charlotte and Peter Fiell, 'Mark Brazier-Jones',
Fiell Publishing, 2012, P. 162



229

230 W

MARK BRAZIER-JONES (BORN 1956)

Two Sera Lights

designed 1998

patinated and silvered iron, glass

height of patinated iron lamp 30in (76cm); width 15in (38cm);

depth 9 3/4in (25cm); height of silvered iron lamp 29 1/2in (75cm);

width 16 1/2in (42cm); depth 11 1/2in (29cm)

\$2,500 - 3,500

Literature

Charlotte and Peter Fiell, 'Mark Brazier-Jones',
Fiell Publishing, 2012, P.132



230

231 W

MARK BRAZIER-JONES (BORN 1956)

Shakti Mirror

designed 2000

painted plaster, beveled glass

height 43 1/2in (109cm); width 23in (58.5cm); depth 2in (5cm)

\$1,500 - 2,000

Literature

Charlotte and Peter Fiell, 'Mark Brazier-Jones',
Fiell Publishing, 2012, p.113

232 W

MARK BRAZIER-JONES (BORN 1956)

Unique Chaise Longue

circa 1995

patinated bronze, wool upholstery

height 26in (66cm); width 31in (79cm); depth 66in (168cm)

\$3,000 - 5,000



231



232



233 W

MARK BRAZIER-JONES (BORN 1956)

Pair of Sera Lanterns

designed 1998

iron, glass

height 94in (239cm); diameter of base 15in (38cm)

\$3,000 - 5,000

Literature

Charlotte and Peter Fiell, 'Mark Brazier-Jones',

Fiell Publishing, 2012, p.167

234

TOM DIXON (BORN 1959)

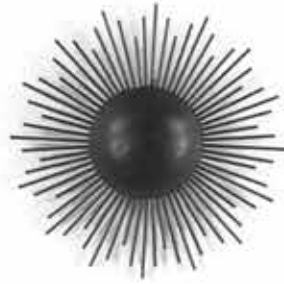
Pair of Wall Lights

circa 1995

patinated metal

diameter 21in (54cm); depth 3in (7.8cm)

\$2,000 - 3,000



234



235 W

TOM DIXON (BORN 1959)

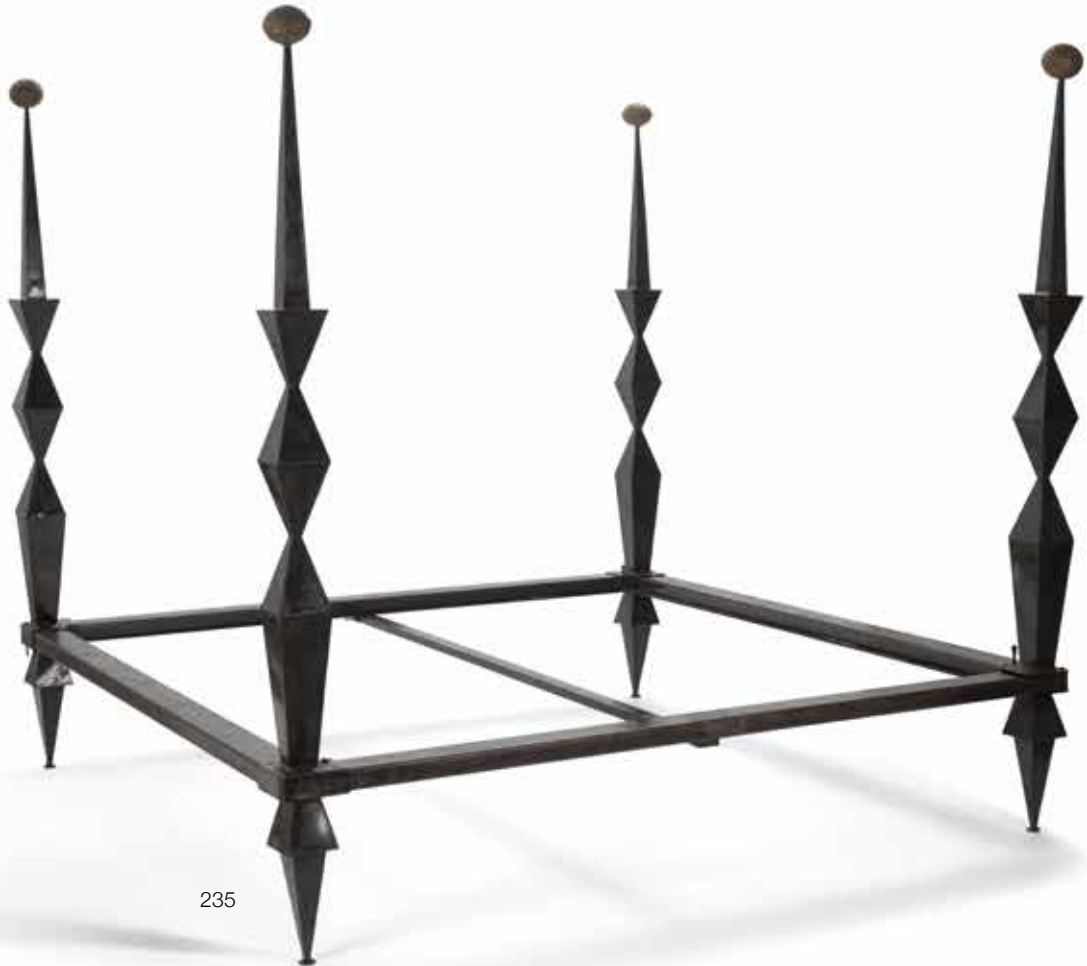
Unique Four Poster Bed

circa 1995

welded steel

height 83in (211cm); width 85in (216cm); depth 85in (216cm)

\$4,000 - 6,000



235

236

OTTO (1915-2009) & VIVIKA HEINO (1910-1995)

Group of Three Vases

1992-1994

glazed stoneware, incised 'Vivika + Otto 92 or 94'

heights 10in (25.4cm); 11 1/2in (29.2cm); 13 3/4in (35cm)

\$500 - 700

237 W

VLADIMIR KAGAN (1927-2016)

Low Table with Drawers

circa 1960

walnut, ebonized wood, brass

height 21in (54cm); width 48in (122cm); depth 26in (66cm)

\$1,000 - 1,500

Provenance

Interiors 20th Century Edition, Christie's South Kensington, September 16, 2008, lot 409



236

236

236

237

238 W

EDWARD G. LIVINGSTON (ACTIVE 1970S)

Rocking Chair

circa 1970

hand carved and laminated figured wood

for Archetypo, carved 'Archetypo LXXII9'

height 40in (101cm); width 27in (68cm); depth 38 1/2in (97cm)

\$1,800 - 2,500

Literature

Dona Z. Meilach, 'Creating Modern Furniture', Crown Publishers Inc.,
New York, p.105, variant example illustrated



239 W

SAM MALOOF (1916-2009)

Rocking Chair

circa 1968

walnut, upholstery

branded 'MALOOF designed made' and inscribed 'RUDOLPH 50.70'
height 45in (114.5cm); width 28in (71.5cm); depth 42in (107cm)

\$7,000 - 10,000



240 W

SAM MALOOF (1916-2009)

Buffet

1969

oak, branded 'designed made MALOOF california', impressed
NAKAMOTO 36 2.69

height 34 1/2in (88cm); width 71 1/2in (182cm); depth 17 1/2in
(44.5cm)

\$12,000 - 18,000

The offered lot is accompanied by a photocopy of the original work
order from the Sam Maloof studio

Provenance

Nakamoto family, Los Angeles, California



241 W

SAM MALOOF (1916-2009)

Pedestal Dining Table

circa 1967

oak, branded 'designed made MALOOF california'

height 29in (74cm); width 85in (216cm); depth 44in (112cm)

\$10,000 - 15,000

The offered lot is accompanied by a photocopy of the original work order from the Sam Maloof studio

Provenance

Nakamoto family, Los Angeles, California



242 W

SAM MALOOF (1916-2009)

Set of Eight Spindle Back Dining Chairs

circa 1968

oak, wool upholstery, branded 'designed made MALOOF california',

with impressed numbers and family name 'NAKAMOTO'

height 37in (94cm); width 21in (54cm); depth 20 1/2in (52cm)

\$15,000 - 20,000

The offered lot is accompanied by a photocopy of the original work order from the Sam Maloof studio

Provenance

Nakamoto family, Los Angeles, California

Literature

Jeremy Adamson, 'The Furniture of Sam Maloof', Norton, 2001, p.131

model illustrated



243

LANNY LYELL (ACTIVE LATE 20TH CENTURY)

Group of Five Bowls

late 20th century

various turned woods, each signed 'L. Lyell', numbered and incised

'California bay, maple burl, spalted maple burl, madrone burl'

diameters 5in to 15in (13cm to 38cm)

\$1,000 - 1,500



244

EDWARD MOULTHROP (1916-2003)

Doughnut Vase

circa 1980

figured tulipwood, with artist's monogram and inscribed 'ED MOULTHROP FIGURED TULIPWOOD LIRIODENDRON TULIPIFERA 307801'

height 9 1/2in (24cm); width 9 1/4in (23cm)

\$1,200 - 1,800

Provenance

Collection of Drs. John and Karen Woodward

245

EDWARD MOULTHROP (1916-2003)

Vessel

black walnut, signed with black monogram and 'MOULTHROP BLACK WALNUT'; together with a Philip Moulthrop vessel, ash leaf maple, signed 'PCM PHILIP MOULTHROP ASH LEAF MAPLE Acer oregundo 7680'

height of each 8 1/4in (21cm)

(2)

\$800 - 1,200



244

245

246

PETER VOULKOS (1924-2002)

Vase

circa 1950

glazed stoneware, signed 'Voulkos' on the underside
height 10 1/4in (26cm)

\$6,000 - 8,000

Provenance

Millard Sheets, California

Thence by descent

'Modern Arts & Design Auction', Los Angeles Modern Auctions,
Los Angeles, March 5, 2017, Lot 62

Collection of Paul J. Coady



247

PETER VOULKOS (1924-2002)

Vase

circa 1952

glazed stoneware, incised 'VOULKOS' on the underside
height 12 3/4in (32.5cm)

\$5,000 - 7,000

Provenance

Modern Art & Design, Los Angeles Modern Auctions,
October 22, 2017, Lot 83
Collection of Paul J. Coady



248

PETER VOULKOS (1924-2002)

Covered Tureen

circa 1953

wheel-thrown gas fired stoneware with wax resist decoration and semi-matte and iron-bearing glaze, inscribed 'Voukos', '53. 2270 B49' in red paint, remains of a paper label

height 14 1/2in (37cm); diameter 14 1/4in (36.3cm)

\$8,000 - 12,000

Peter Voukos won the first prize in the pottery category for this tureen at the Eighth National Decorative Arts and Ceramics Exhibition at the Wichita National in 1953

Provenance

Private Collection, Florida

'Made in California', Bonhams, Los Angeles, May 4, 2009, Lot 9044
Collection of Paul J. Coady

Exhibition

Eighth National Decorative Arts and Ceramics Exhibition, The Wichita Art Association, Wichita, Kansas, April 11-May 11, 1953

Literature

Eighth National Decorative Arts and Ceramics Exhibition, The Wichita Art Association, Wichita, Kansas, April 11-May 11, 1953, Brochure, checklist # 344

'Show Time: Eighth National Decorative Arts-Ceramic Exhibition,'
Ceramics Monthly, July 1953, p.18, illustration



249 W

PETER VOULKOS (1924-2002)

Untitled (Plate)

1954

glazed stoneware, signed 'Voukos' on the underside
height 2 1/4in (5.5cm); diameter 16 7/8in (43cm)

\$1,500 - 2,000

Provenance

Frank Lloyd Gallery, Santa Monica

Collection of Paul J. Coady



250

PETER VOULKOS (1924-2002)

Untitled (Bowl)

1973

gas fired stoneware with pass throughs and clear glaze
height 5 1/2in (14cm); diameter 7in (18cm)

\$3,000 - 5,000

Provenance

Private Collection (acquired directly from the artist)

'Made in California: Contemporary Art', Bonhams, Los Angeles, April 1, 2014, Lot 35

Collection of Paul J. Coady

Exhibited

Pomona, American Museum of Ceramic Art, 'Peter Voulkos: Echoes of the Japanese Aesthetic', November 12, 2005 - February 4, 2006

We are grateful to Sam Jornlin and the Voulkos & Co. Catalogue project for assisting with this catalogue description. This work is listed under number CR703.6-G in the Voulkos & Co. Catalogue Project Quest Database.

251

PETER VOULKOS (1924-2002)

Tea Bowl

1950s

Glazed stoneware, signed 'Voulkos' on the underside
height 4 1/4in (11cm); diameter 4 1/4in (11cm)

\$3,000 - 3,500

Provenance

'The Modern House: Contemporary Art + Design', Bonhams, Los Angeles, November 1, 2016, Lot 1155

Collection of Paul J. Coady



250



251

252

PETER VOULKOS (1924-2002)

Untitled (Teabowl)

1977

gas fired wheel-thrown and altered stoneware with porcelain, cobalt oxide and clear glaze, signed and dated 'VOULKOS 77' on the underside

height 3 1/2in (9cm); diameter 5 3/4in (14.6cm)

\$3,000 - 5,000

Provenance

Private Collection, Southern California

'Made in California: Contemporary Art', Bonhams, Los Angeles, April 2, 2013, Lot 32

Collection of Paul J. Coady

We are grateful to Sam Jornlin and the Voulkos & Co. Catalogue Project for assisting with this catalogue description. The work is listed under CR716. 5-G in the Voulkos & Co. Catalogue Project Quest Database.



252

253

PETER VOULKOS (1924-2002)

Untitled (Bowl)

1995

glazed stoneware, signed and dated 'VOULKOS 95' on the underside

height 5 5/8in (14.4cm); diameter 7 1/4in (18.5cm)

\$2,500 - 5,000

Provenance

Collection of Paul J. Coady



253

254 W

PETER VOULKOS (1924-2002)

Clay Form #4, (CR900.8-W)

1981

wood fired stoneware, signed and dated 'VOULKOS 81' in iron oxide on the foot

together with a copy of the original receipt from Braunstein Gallery dated April 10, 1982

height 4 3/4in (12cm); diameter 21 1/4in (54cm)

\$8,000 - 12,000

Thanks to Sam Jornlin of the Voulkos & Co. Catalog Project who assisted in the cataloguing of this piece and who notes:

[The plate] was wood fired —most likely in Peter Callas' first anagama in Piermont, New York— without any prior application of glazes.

(There is a possibility that it was fired in the Peters Valley anagama by Katsuyuke Sakazume.)

Provenance

Braunstein Gallery, San Francisco

'20th Century Decorative Arts', Bonhams, Los Angeles, April 29, 2015, Lot 347

Collection of Paul J. Coady



255 W

PETER VOULKOS (1924-2002)

Untitled (Plate)

1978

gas fired wheel-thrown and manipulated stoneware with porcelain pass-throughs, drawing and punctures with cobalt slip/oxide and clear glaze, signed and dated 'VOULKOS 78' in black on the underside
diameter 22in (56cm)

\$8,000 - 12,000

Provenance

Jim and Myra Morgan, Kansas City

Private Collection, Southern California

'Made in California: Contemporary Art', Bonhams, Los Angeles, November 17, 2009, Lot 2039

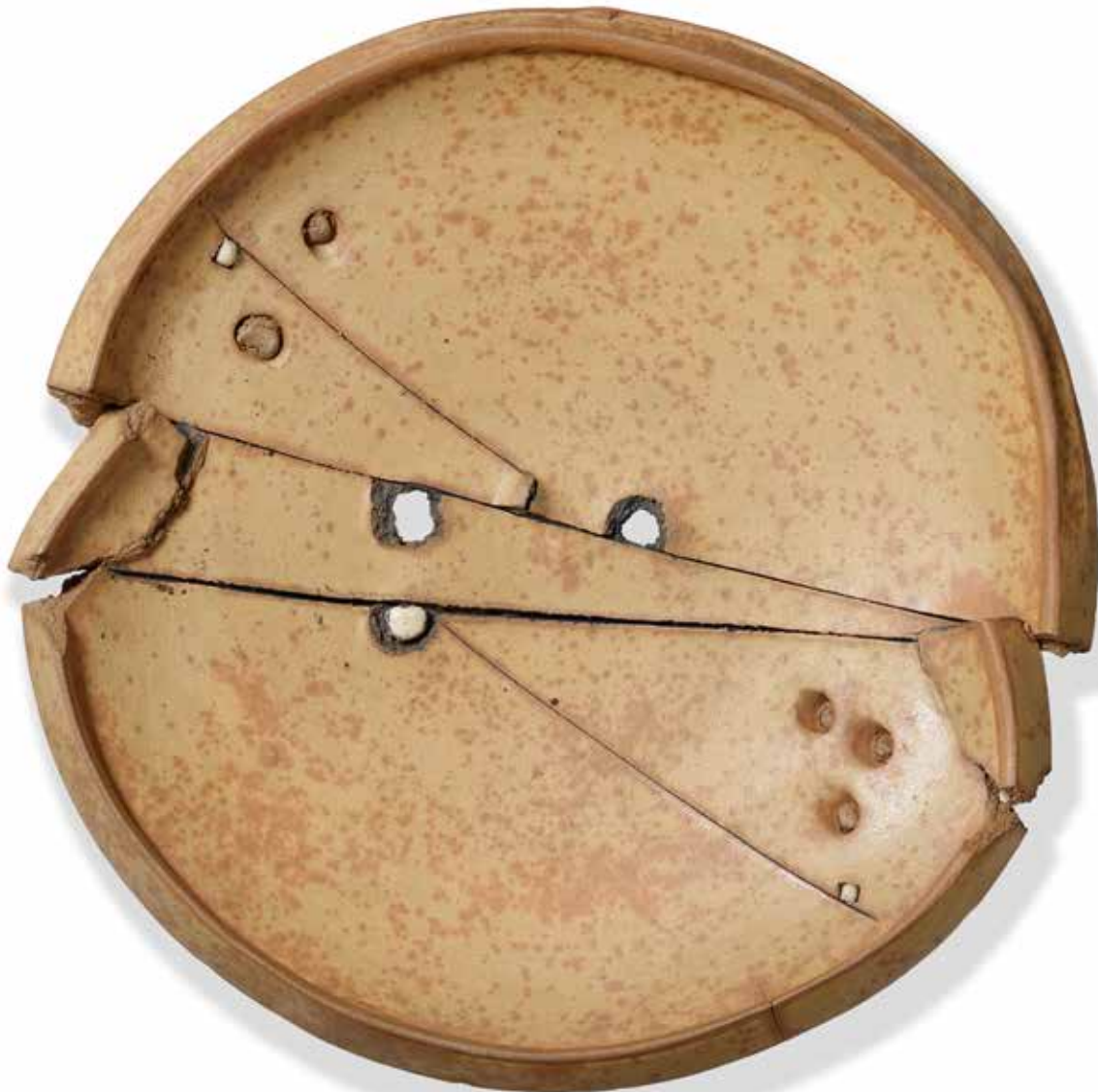
Collection of Paul J. Coady

Exhibited

Murray, Clara Eagle Gallery, *The Morgan Collection*, 16 March - 14

April 1980, (illustrated in the exhibition catalogue, fig. 2)

We are grateful to Sam Jorlin and the Voulkos & Co. Catalogue Project for assisting with the catalogue description.



256

PETER VOULKOS (1924-2002)

Five Tea Cups

circa 1960

glazed stoneware, signed 'Voulkos' in black

height 4 1/2in (11cm)

4 1/2 x 3 x 3in (each)

\$3,000 - 5,000

Provenance

'Modern Art & Design', Los Angeles Modern Auctions, February 21, 2016, Lot 274

Collection of Paul J. Coady



257

PETER VOULKOS (1924-2002)

Group of Five Objects

circa 1955

comprising a footed vase, a tea cup, a pitcher and two footed bowls
glazed stoneware, signed on the underside

*height of footed vase 4 1/2in (11cm); diameter 5 1/2in (13cm); height
of tea cup 4in (10cm); diameter 3 1/4in (8cm); height of pitcher 6 1/4in
(15cm); length over handle 6 1/4in (15cm); height of bowl 2in (5cm);
diameter 7 1/2in (19cm); height of small footed bowl 4in (10cm);
diameter 6in (15cm)*

\$1,000 - 1,500



258

SHIMAOKA TATSUZO (1917-2007)

Vase and Jar

glazed stoneware, each with artist signed box, jar with incised
artist's cypher

heights 9 1/4in and 10 1/4in (23cm and 26cm);

widths 5in and 5 1/2in (12cm and 13cm)

\$1,500 - 2,500

259

SHIRO TSUJIMURA (BORN 1947)

Iga Hanging Flower Vase

circa 1995

glazed and incised stoneware, unmarked

height 4 1/2in (11.4cm)

\$800 - 1,200



258



259

260

TOSHIKO TAKAEZU (1922-2011)

Vessel and Bowl

circa 1985

glazed ceramic, each incised 'II'

height of vessel 6 1/4in (16cm); height of bowl 3 3/8in (8.5cm);

width of bowl 6 1/2 (16.5cm)

\$1,000 - 1,500



260

261

HARRISON MCINTOSH (1914-2016)

Covered Jar

glazed stoneware, marked 'HM' and with Harrison McIntosh paper label

height 7 1/4in (18cm); diameter 7 1/4in (18cm)

\$1,500 - 2,000



261

262

OTTO (1915-2009) & VIVIKA HEINO (1910-1995)

Two Bowls and Decorated Tea Bowl

1991

glazed stoneware, two incised 'Vivika + Otto 91' and 'Vivika + Otto 92'
heights 6 1/2in (17cm), 3 3/4 in (9.5cm) and 2 3/4in (7.5cm)

\$800 - 1,200



263

MARGUERITE WILDENHAIN (1896-1985)

Twist Vase

circa 1950

glazed stoneware, incised 'Pond Farm'

height 12 1/4in (31.5cm)

\$2,000 - 3,000

Provenance

Collection of Olive Thompson Cowell (gift from the artist)

Acquired from the above by the present owner

264

MARGUERITE WILDENHAIN (1896-1985)

Pine Cone Vase

circa 1950

glazed stoneware, incised 'Pond Farm'

height 8in (20.2cm)

\$2,000 - 3,000

Provenance

Collection of Olive Thompson Cowell (gift from the artist)

Acquired from the above by the present owner



263



264

265

MICHAEL CARDEW (1901-1983)

Fish Plate, Bowl and Shaped Rectangular Dish

circa 1970

ceramic, impressed with makers mark

length of fish plate 17 1/2in (45.2cm); diameter of bowl 10in (25.3cm);

length of dish 11 1/2in (29.4cm)

\$1,500 - 2,000



266

LUCIE RIE (1902-1995)

Vase

circa 1955

porcelain, manganese with incised decoration, impressed with artist's seal 'LR'

height 8in (20cm); diameter 5in (13cm)

\$3,000 - 5,000

Provenance

Private Collection, California



266

267

SHIMAOKA TATSUZO (1917-2007)

Vase

stoneware, incised artist's cypher on underisde, with artist signed box

height 12in (30cm); diameter 7 1/2in (19cm)

\$2,500 - 3,500



267

268 W

KEN FERGUSON (1928-2004)

Charger with Hares

1992

glazed and worked stoneware, signed in black 'Ferguson'

and dated '1992'

length 22in (56cm); width 18 1/2in (47cm)

\$3,000 - 5,000



268

269 W

PETER CALLAS (BORN 1951)

Tall Double Necked Vessel

1992

glazed stoneware, incised 'Callas 92'

height 22 1/2in (57cm)

\$2,000 - 3,000



269

270 W

WAYNE HIGBY (BORN 1943)

Landscape Vessel (Ebb Tide Beach)

raku fired glazed earthenware, impressed with artist's cypher
height 11in (28cm); width 19 3/4in (50cm); depth 16 1/4in (41.5cm)

\$4,000 - 6,000

271 W

DON REITZ (1929-2014)

Vessel

1993

salt glazed stoneware, incised 'Reitz 93'

height 36 1/4in (92cm)

\$3,000 - 5,000



270



271

272

KAREN KARNES (1925-2016)

Two Covered Tureens and a Dish
glazed stoneware, each with 'KK' monogram
heights from 2 3/4in (7cm) to 11 1/2in (29cm)

\$1,200 - 1,800



273

KAREN KARNES (1925-2016)

Group of Four Covered Vessels

glazed stoneware, each with 'KK' monogram

heights 8 1/2in (21.5cm) to 13 1/2in (34.3cm); widths 8in (20.2cm) to 15in (38.1cm)

\$1,500 - 2,500



274 W

KAREN KARNES (1925-2016)

Winged Vessel

circa 1990

glazed stoneware, with 'KK' monogram

height 9 3/4in (25cm); width 29 1/2in (75cm)

\$800 - 1,200

275

KAREN KARNES (1925-2016)

Vessel

circa 1990

glazed and wood fired stoneware, with 'KK' monogram

height 13in (33cm); width 12 1/4in (31cm)

\$1,500 - 2,500



274



275

276 W

KAREN KARNES (1925-2016)

Double Spouted Vessel

circa 1990

glazed and wood-fired stoneware, with KK monogram

height 12 1/4in (31cm); width 22 1/2in (57cm)

\$800 - 1,200



276

277

KEN FERGUSON (1928-2004)

Rabbit Handled Pouring Vessel

circa 1995

glazed stoneware, unsigned

height 15 1/4in (38.5cm)

\$3,000 - 5,000



277

278

ROBERT PALUSKY (BORN 1942)

Covered Jar

1981

glazed earthenware, internally decorated glass,

inscribed 'Robert Palusky 1981 #11'

height 10in (25.4cm)

\$1,500 - 2,000



278

279

KAREN KARNES (1925-2016)

Group of Three Bowls

glazed stoneware, each with impressed 'KK' monogram
diameters 10in (25.5cm); 13 3/4in (35cm); 15 3/4in (40cm)

\$1,000 - 1,500



280

BERNARD LEACH (1887-1979)

Cut Sided Bowl

circa 1965

stoneware, stamped with St. Ives seal and 'BL' monogram

height 4 3/4in (12cm); diameter 8 1/4in (21cm)

\$1,000 - 1,500

281

DAVID LEACH (1911-2005)

Group of Three Vessels

circa 1980

glazed stoneware and porcelain; comprising a shouldered vase, ovoid vase and a fluted tea bowl, each impressed with 'DL' seal, the largest also impressed 'TL'

heights 3 1/8in (8cm); 5 3/4in (14.6cm); 11 3/4in (30cm)

\$1,500 - 2,000



280



281

282

PAUL CHALEFF (BORN 1947)

Group of Four Vessels

circa 1990

raku glazed earthenware, comprising three vases and a covered jar,
largest vase incised 'Chaleff 92 153', another vase incised 'Chaleff 90
NY', one vase unmarked,

covered jar incised 'Chaleff 90 153'

heights 8in (20.4) to 18 1/2in (47.5cm)

\$1,500 - 2,000



283

RUTH DUCKWORTH (1919-2009)

Vase

1978

ceramic, signed in black 'R 78'

height 9 1/4in (23.3cm); diameter 9 1/4in (23.5cm)

\$1,000 - 1,500



283

284

DAVID REGAN (BORN 1964)

Teapot (Cabin Interior)

1992

glazed porcelain, incised 'Regan 92'

height 11in (28cm)

\$1,500 - 2,500



284

285 W

RUDY AUTIO (1926-2007)

Three Graces (Covered Vessel)

1977

glazed earthenware, signed and dated 'AUTIO 77'

height 28in (71.2cm); width 19in (48.3cm); depth 16in (40.6cm)

Provenance

Collection of Dorothy Weiss

'20th Century Decorative Arts and Design',

Bonhams, Los Angeles, October 27, 2014, Lot 301

Collection of Paul J. Coady

\$5,000 - 7,000



286

OTTO (1908-2007) AND GERTRUD NATZLER (1908-1971)

Footed Bowl

1963

glazed terracotta, signed in black 'NATZLER', bearing paper label
with typed inscription 'M682'

height 4 3/8in (11cm); diameter 6 1/4 in(16cm)

\$1,200 - 1,800

287

BEATRICE WOOD (1893-1998)

Figural Vase

circa 1990

luster and turquoise glazed earthenware, painted in black
'BEATO' and 'BWTF 606'

height 8 1/4in (21cm)

\$4,000 - 6,000



286



287



288 W

JOHN GLICK (1938-2017)

Plaque and Three Vessels

for Plum Tree Pottery, glazed stoneware, each incised 'Glick'

height of vessels 6in (15.2cm) to 7in (18cm);

plaque 24 x 22in (61 x 56cm)

\$1,000 - 1,500





289 W

JOHN GLICK (1938-2017)

Group of Four Works

glazed stoneware, comprising: two chargers, incised 'Glick' and impressed 'PLUMTREE POTTERY'; covered jar incised 'Glick' and a bowl, unsigned

height of jar and bowl 8 3/4in (22cm) and 4 1/4in (11cm); diameters of chargers 17 1/2in (44.5cm) and 22 1/4in (56.5cm)

\$2,000 - 3,000



290 W

RALPH BACERRA (1938-2008)

Untitled (Lidded Sphere)

2001

earthenware with over-glazed enamels and metallic lusters,

signed 'Bacerra' and dated '2001' on underside

height 24in (61cm); diameter 20in (51cm)

\$6,000 - 9,000

Literature

Jo Lauria, 'Ralph Bacerra Exquisite Beauty', Otis College of Art and Design, 2015, p.8, 26, 49 for similar examples of design and decoration



291 W

RICKY MALDONADO (BORN 1953)

Group of Three Vases

1995-2000

slip glazed coil built terracotta, one initialed on underside 'RM'
heights respectively 17in (44cm), 19in (49cm) and 26in (66cm)

\$1,500 - 2,500

Literature

Jo Lauria, 'Ralph Bacerra Exquisite Beauty', Otis College of Art and Design, 2015, p.80 for a discussion and illustration of Maldonado's dotted work and its relationship to pieces created by his former teacher, Ralph Bacerra



292 W

CHRIS STALEY (BORN 1954)

Two Handled Vase

1997

glazed stoneware, incised 'STALEY 1997' and with artist's monogram
height 28 1/8in (71.5cm)

\$1,000 - 1,200

293

PAUL SOLDNER (1921-2011)

Vase with Torn Rim

earthenware, unsigned

height 16 1/2in (42cm)

\$1,500 - 2,000



292



293

294

JAMES MAKINS (BORN 1946)

Set of Six Cylinders

circa 2000

glazed porcelain, signed in the glaze 'Makins'
heights 13 1/2in (34.5cm) to 15 3/4in (40cm)

\$4,000 - 6,000



295

FARAONE

Tea Pot

1994

sterling silver, stamped '3/9 Sets Sept 1994 FARAONE Milano'
height 6in (15cm); length 8in (20cm); depth 6in (15cm)

\$1,000 - 1,500



295

296

GABRIELLE DE VECCHI (1938-2011)

Phoemina Vase

designed 1978, executed circa 1990

sterling silver, stamped 'De Vecchi 925'

height 7 1/2in (19cm); length 11 1/4in (29cm); depth 2in (5cm)

\$1,000 - 1,500

The offered lot comes from an annual production of 25 Phoemina vessels. The Phoemina and Diana collection takes its inspiration from abstracted forms of the face in profile.



296

297 W

ROBERT HUDSON

Dry Ice

2007

cast iron, steel, stainless steel, enamel, epoxy

height 37 1/2in (95cm); width 26in (66cm); depth 19 1/2in (49.5cm)

\$3,000 - 5,000

Provenance

Frank LLOYd Gallery, Santa Monica



298 W

JESUS BAUTISTA MORALES (1950-2015)

Untitled

circa 1985

carved granite

height 83.5in (212cm); width 22 1/4in (57cm);

depth 14 1/2in (37cm)

\$7,000 - 10,000



299 W

IDA KOHLMAYER (1912-1997)

Untitled

1995

Painted aluminum, signed and dated on underside 'Kohlmeier 1995'
height 87in (220cm); width 36in (91cm); depth 19in (48cm)

\$18,000 - 25,000

Provenance

Imago Galleries, Palm Desert, California



300

HARVEY LITTLETON (1922-2013)

Untitled (Sculpture with Pedestal)

1981

blown glass, signed '© Harvey K Littleton 1981'

height 9 1/4in (23.5cm)

\$1,000 - 1,500

301

MAZZEGA

Eliel Saarinen Building Model

glass, etched 'MARINA CITTA VENEZIA/ELIEL SAARINEN/L.V.R. Di

MAZZEGA MURANO'

height 13in (33cm); diameter of base 10in (25cm)

\$3,000 - 5,000



300



301

302 W

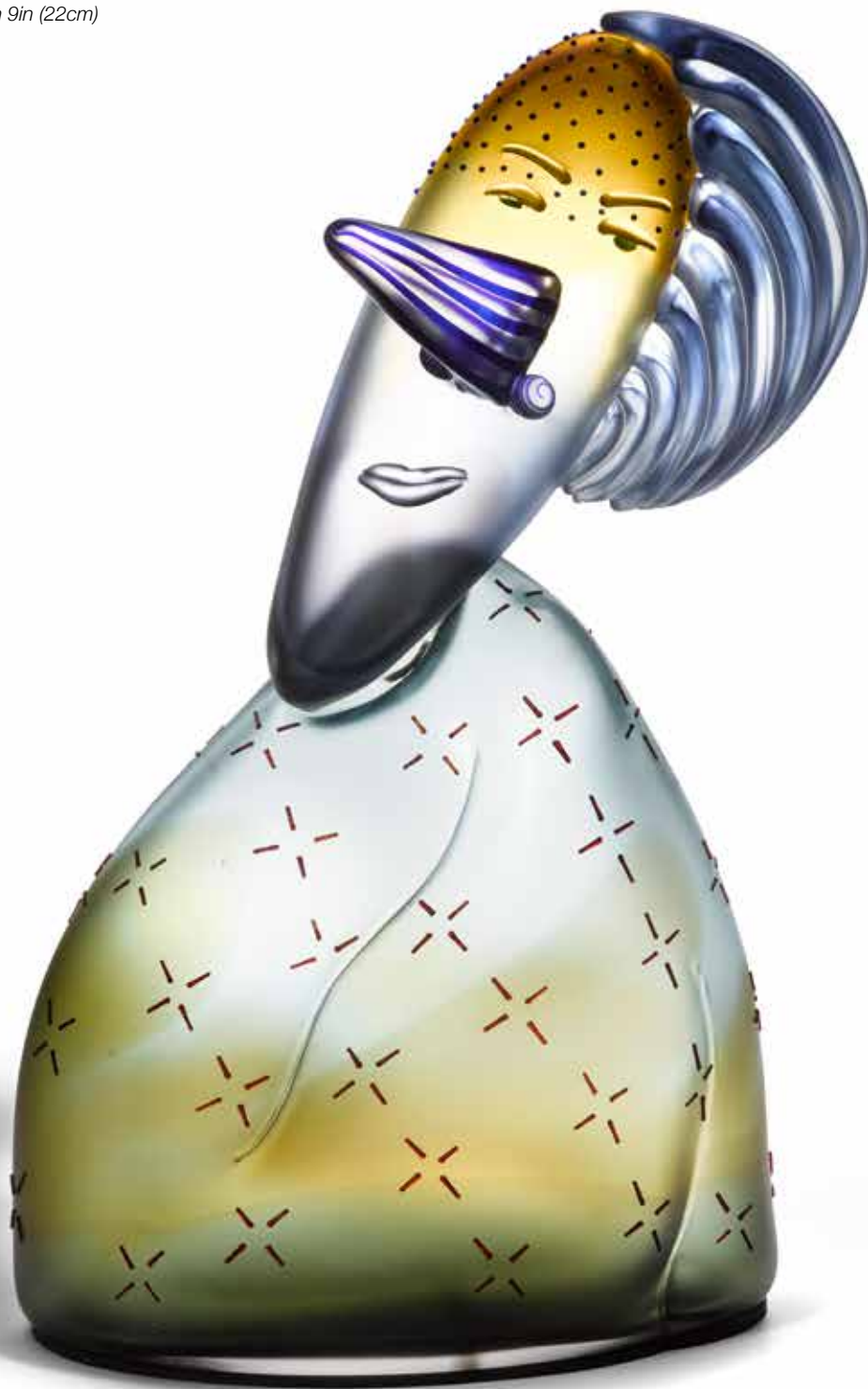
DAN DAILEY (AMERICAN, BORN 1947)

Disdain

2006

blown, sandblasted and acid polished glass, anodized aluminum
height 26in (66cm); width 16in (40cm); depth 9in (22cm)

\$7,000 - 10,000





303

303 W
RICHARD ROYAL (BORN 1952)
Relationship Series
1995
blown glass, signed 'Richard Royal 1995'
height 24 3/4in (63cm)

\$1,200 - 1,800

Provenance
Property of a West Coast Collector

304
GINNY RUFFNER (BORN 1952)
Envisioning Renovation
1995
lampworked glass, mixed media
height 11in (27cm); width 9in (22cm); depth 9in (22cm)

\$1,500 - 2,000

305 W
GINNY MARTIN RUFFNER (BORN 1952)
The Reign of Interconnectedness
1997
From the Structuring Beauty Series, lampworked glass, mixed media
height 16in (40cm); width 21in (53cm); depth 12in (30cm)

\$1,200 - 1,800



304



305

306 W

KARLA TRINKLEY (BORN 1956)

Amphora

1995

pâte de verre, steel

height 44in (111cm); width 12in (30cm); depth 18in (45cm)

\$5,000 - 7,000

Literature

Timothy Anglin Burgard, 'The Art of Craft: Contemporary Works from the Saxe Collection', Fine Arts Museums of San Francisco, 1999, p. 96 for a color plate of work by Trinkley with similar technique and design



307 W

STEVEN WEINBERG (BORN 1954)

Puzzle No. 810608

cast and cut glass, signed 'WEINBERG 810608'

height 7 1/2in (19cm); width 7 5/8in (19.5cm); depth 2 3/8in (6cm)

\$1,000 - 1,500

308 W

STEVEN WEINBERG (BORN 1954)

Puzzle No. 820301

1982

cast and cut glass, inscribed 'WEINBERG 820301'

height 5 1/4in (13.3cm); width 5 1/2in (14cm); depth 5 1/4in (13.3cm)

\$1,000 - 1,500



307



308

309 W

STEVEN WEINBERG (BORN 1954)

Puzzle No. 830203

cast and cut glass, signed 'WEINBERG 830203'

height 4 3/4in (12cm); width 6 3/4in (17cm); depth 6 5/8in (16.7cm)

\$1,500 - 2,000

310 W

STEVEN WEINBERG (BORN 1954)

Puzzle No. 97907

1979

cast and cut glass, signed 'WEINBERG 79 97907'

height 7 1/4in (18.5cm); width 7 1/4in (18.5cm); depth 3 1/8in (8cm)

\$1,200 - 1,800



309



310

311 W

JAN EXNAR (BORN 1951)

Altus

2012

cut and polished glass, signed 'EX 2012 /3'

height 11 3/4in (30cm); width 12 1/2in (32cm); depth 19 3/4 in (50.3cm)

\$2,000 - 3,000

312

MICHAEL PAVLIK (BORN 1941)

Two Part Sculpture on Stand

1981

cut, polished and laminated glass, both parts inscribed 'Michael Pavlik 81' in script and numbered '1605'

height 8in (22cm); approximate width 12 1/2in (31.8cm); depth 12in (30.5cm)

\$1,500 - 2,000



311



312

313 W

BERTIL VALLIEN (BORN 1938)

Boat

circa 1985

unique work, sand cast glass internally decorated with polychrome glass, the underside with powdered oxides and rendered in relief with the form of a face, engraved 'B. Vallien Pilchuck 85 22'
height 4in (10cm); width 26in (66cm); depth 4in (10cm)

\$2,500 - 3,500

The offered lot was created while Bertil Vallien was the Artist-in-Residence from 1984-1986 at the Pilchuck Glass School

Provenance

Private Collector, Seattle, Washington



313

314 W

BERTIL VALLIEN (BORN 1938)

Map VII

1994

cast glass, metal base, signed 'B. Vallien BE 14 94'
height 21in (53.4cm); 18in (45.7cm); depth 8in (20.3cm)

\$4,000 - 6,000



314

315 W

DALE CHIHULY (BORN 1941)

Group of Twelve Floats

1999

blown glass

approximate diameters from 6in to 14in (15cm to 36cm)

\$6,000 - 8,000

The offered lot was part of a 1999 installation at a Palm Springs,
California residence



316 W

DALE CHIHULY (BORN 1941)

Golden Yellow Soft Cylinder

1993

blown glass, engraved 'Chihuly 93'

height 16in (40cm); width 13in (33cm); depth 13in (33cm)

\$15,000 - 25,000

Literature

Walter Darby Bannard and Henry Geldzahler, 'Chihuly: Form From Fire', The Museum of Arts and Sciences, Inc., Daytona Beach, Florida, p. 55-61 for a discussion and illustrations of Soft Cylinders



317

DALE CHIHULY (BORN 1941)

Basket with Green Lip Wrap

blown glass

height 11in (28cm); width approximately 12in (30cm); depth approximately 11in (28cm)

\$4,000 - 6,000

318 W

DALE CHIHULY (BORN 1941)

Ruby and Crystal Chandelier

2000

blown glass

96 x 54 x 54in (244cm x 137 x 137cm)

\$70,000 - 90,000

The offered lot is being sold from photographs

Chihuly's Chandeliers are sculpture on a grand scale, composed of hundreds of blown glass elements that together make up elaborate, intricate compositions. Starting in 1992, Chihuly has created them for indoor and outdoor spaces all around the world, in institutional settings such as the Victoria & Albert Museum in London, England and the Dallas Museum of Art, as well as in many private homes and collections.

Provenance

Commissioned directly from the artist



317



318

westedge

DESIGN FAIR

OCTOBER 18-21
THE BARKER HANGAR
SANTA MONICA

EXPLORE THOUSANDS OF THE LATEST PRODUCTS
AND DESIGN IDEAS FOR YOUR HOME



SPONSORED IN PART BY:



WESTEDGEDESIGNFAIR.COM

OFFSITE SOLD PROPERTY STORAGE INFORMATION

Please note that all lots listed at the beginning of our printed catalog, if not removed immediately after the sale, will be transferred to a nearby storage facility. For the convenience of the successful bidder of one or more of these lots, all purchased lots will be transferred to our offsite storage together. Please read the Conditions of Sale regarding the removal of sold lots.

Bonhams' storage and logistics partner is Box, Pack, & Ship, llc, a well-known organization that specializes in crating, packaging and shipping.

Our storage and logistics partnership provides several beneficial services. The first being 5 days of free storage.

- During this auction, clients will be expected to pick up all property from Bonhams by 5pm on Monday October, 29.
- All items listed at the beginning of our printed catalog, along with all other items purchased, if not removed immediately after the sale, will be transferred to Box, Pack, & Ship, llc warehouse. With an appointment made 24 hours in advance, clients can pick up their property at 3800 S. Main Street Los Angeles, CA 90037.
- Box, Pack, & Ship, llc will charge an uplift fee to transport your items to their warehouse. Small items that can be handled easily by one person will be charged \$50. Larger items that can still be handled by one person will be charged \$85. Large items that require two people to handle will be charged \$100. Charges will be payable directly to Box, Pack, & Ship, llc. Should you choose to have Box, Pack, & Ship, llc ship or deliver your property, this uplift fee will be waived.
- Clients will have 5 days of free storage to retrieve their property or make arrangements with Box, Pack, & Ship, llc to pack and ship their property. Storage fees will begin to accrue on the 6th day of storage.
- Retrieval from the offsite warehouse is by appointment only. Clients must call 24 hours in advance. Clients can utilize the delivery services offered by Box, Pack, & Ship, llc or clients may make their own arrangements. Please call +1 (800) 674 4705.
- Box, Pack, & Ship, llc is available to ship internationally. They offer importing and exporting services. Clients can select either airfreight or ocean cargo delivery options, which range from door-to-port, door-to-airport with door-to-door service also available. Clients can ship one item, co-load or container load at a discounted rate through Box, Pack, & Ship, llc. Please call +1 (800) 674 4705 for more information.
- All purchases not designated for offsite storage will remain onsite at Bonhams for a period of 21 days beginning the date of the auction. During this 21 day period, clients may remove such property themselves, make arrangements with the Bonhams packaging and shipping department or provide their own shipper for removal of all property. If a client does not retrieve his/her property or finalize shipping arrangements within 21 days, the purchases will be removed to the offsite storage facility of Box, Pack, & Ship, llc. Again, uplift charges for packing and transport from our gallery to Box, Pack, & Ship, llc will be charged by Box, Pack, & Ship, llc.
- Payment of the hammer price, premium and any applicable sales taxes must be made directly to Bonhams prior to the release of property. Any removal, storage or other fees due to Box, Pack, & Ship, llc should be made directly to Box, Pack, & Ship, llc.
- Change of shipping address must be authorized by Bonhams Revenue Manager, Martin Romero, before Box, Pack, & Ship, llc will be permitted to re-route your purchases.

LOTS TO BE REMOVED TO STORAGE:

| | | | |
|-----|-----|-----|-----|
| 8 | 137 | 180 | 242 |
| 10 | 138 | 181 | 249 |
| 40 | 139 | 185 | 254 |
| 41 | 140 | 186 | 255 |
| 50 | 141 | 187 | 268 |
| 51 | 142 | 189 | 269 |
| 56 | 143 | 191 | 270 |
| 83 | 144 | 192 | 271 |
| 93 | 145 | 193 | 274 |
| 94 | 146 | 194 | 276 |
| 95 | 147 | 196 | 285 |
| 96 | 148 | 197 | 288 |
| 97 | 150 | 198 | 289 |
| 99 | 151 | 199 | 290 |
| 100 | 152 | 201 | 291 |
| 101 | 153 | 202 | 292 |
| 102 | 154 | 203 | 297 |
| 103 | 155 | 204 | 298 |
| 105 | 156 | 205 | 299 |
| 106 | 157 | 209 | 302 |
| 109 | 158 | 215 | 303 |
| 111 | 159 | 216 | 305 |
| 113 | 160 | 218 | 306 |
| 114 | 161 | 222 | 307 |
| 115 | 162 | 223 | 308 |
| 116 | 163 | 224 | 309 |
| 117 | 165 | 225 | 310 |
| 118 | 166 | 226 | 311 |
| 119 | 167 | 227 | 313 |
| 120 | 168 | 228 | 314 |
| 122 | 170 | 230 | 315 |
| 124 | 171 | 231 | 316 |
| 125 | 172 | 232 | 318 |
| 126 | 173 | 233 | |
| 127 | 174 | 235 | |
| 130 | 175 | 237 | |
| 131 | 176 | 238 | |
| 133 | 177 | 239 | |
| 134 | 178 | 240 | |
| 136 | 179 | 241 | |

CONDITIONS OF SALE

The following Conditions of Sale, as amended by any published or posted notices or verbal announcements during the sale, constitute the entire terms and conditions on which property listed in the catalog shall be offered for sale or sold by Bonhams & Butterfields Auctioneers Corp. and any consignor of such property for whom we act as agent. If live online bidding is available for the subject auction, additional terms and conditions of sale relating to online bidding will apply; see www.bonhams.com/WebTerms for the supplemental terms. As used herein, "Bonhams," "we" and "us" refer to Bonhams & Butterfields Auctioneers Corp.

1. As used herein, the term "bid price" means the price at which a lot is successfully knocked down to the purchaser. The term "purchase price" means the aggregate of (a) the bid price, (b) a PREMIUM retained by us and payable by the purchaser EQUAL TO 25% OF THE FIRST \$250,000 OF THE BID PRICE, 20% OF THE AMOUNT OF THE BID PRICE ABOVE \$250,000 UP TO AND INCLUDING \$4,000,000, AND 12.5% OF THE AMOUNT OF THE BID PRICE OVER \$4,000,000, and (c) unless the purchaser is exempt by law from the payment thereof, any Alabama, Arizona, California, Colorado, Connecticut, Florida, Georgia, Illinois, Massachusetts, Nevada, New Jersey, New York, Pennsylvania, Texas, Virginia, Washington, D.C., Washington state, or other state or local sales tax (or compensating use tax) and other applicable taxes.

2. On the fall of the auctioneer's hammer, the highest bidder shall have purchased the offered lot in accordance and subject to compliance with all of the conditions set forth herein and (a) assumes full risk and responsibility therefor, (b) if requested will sign a confirmation of purchase, and (c) will pay the purchase price in full or such part as we may require for all lots purchased. No lot may be transferred. Any person placing a bid as agent on behalf of another (whether or not such person has disclosed that fact or the identity of the principal) may be jointly and severally liable with the principal under any contract resulting from the acceptance of a bid.

Unless otherwise agreed, payment in good funds is due and payable within five (5) business days following the auction sale. Whenever the purchaser pays only a part of the total purchase price for one or more lots purchased, we may apply such payments, in our sole discretion, to the lot or lots we choose. Payment will not be deemed made in full until we have collected good funds for all amounts due.

Payment for purchases may be made in or by (a) cash, (b) cashier's check or money order, (c) personal check with approved credit drawn on a U.S. bank, (d) wire transfer or other immediate bank transfer, or (e) Visa, MasterCard, American Express or Discover credit, charge or debit card. A processing fee will be assessed on any returned checks. Please note that the amount of cash notes and cash equivalents that can be accepted from a given purchaser may be limited.

To the fullest extent permitted by applicable law: The purchaser grants us a security interest in the property, and we may retain as collateral security for the purchaser's obligations to us, any property and all monies held or received by us for the account of the purchaser, in our possession. We also retain all rights of a secured party under the California Commercial Code. If the foregoing conditions or any other applicable conditions herein are not complied with, in addition to all other remedies available to us and the consignor by law, we may at our election: (a) hold the purchaser liable for the full purchase price and any late charges, collection costs, attorneys' fees and costs, expenses and incidental damages incurred by us or the consignor arising out of the purchaser's breach; (b) cancel the sale, retaining as liquidated damages all payments made by the purchaser; and/or (c) cancel the sale and/or

resell the purchased property, at public auction and/or by private sale, and in such event the purchaser shall be liable for the payment of all consequential damages, including any deficiencies or monetary losses, and all costs and expenses of such sale or sales, our commissions at our standard rates, all other charges due hereunder, all late charges, collection costs, attorneys' fees and costs, expenses and incidental damages. In addition, where two or more amounts are owed in respect of different transactions by the purchaser to us, to Bonhams 1793 Limited and/or to any of our other affiliates, subsidiaries or parent companies worldwide within the Bonhams Group, we reserve the right to apply any monies paid in respect of a transaction to discharge any amount owed by the purchaser. If all fees, commissions, premiums, bid prices and other sums due to us from the purchaser are not paid promptly as provided in these Conditions of Sale, we reserve the right to impose a finance charge equal to 1.5% per month (or, if lower, the maximum nonusurious rate of interest permitted by applicable law), on all amounts due to us beginning on the 31st day following the sale until payment is received, in addition to other remedies available to us by law.

3. We reserve the right to withdraw any property and to divide and combine lots at any time before such property's auction. Unless otherwise announced by the auctioneer at the time of sale, all bids are per lot as numbered in the catalog and no lots shall be divided or combined for sale.

4. We reserve the right to reject a bid from any bidder, to split any bidding increment, and to advance the bidding in any manner the auctioneer may decide. In the event of any dispute between bidders, or in the event the auctioneer doubts the validity of any bid, the auctioneer shall have sole and final discretion either to determine the successful bidder or to re-offer and resell the article in dispute. If any dispute arises after the sale, our sales records shall be conclusive in all respects.

5. If we are prevented by fire, theft or any other reason whatsoever from delivering any property to the purchaser or a sale otherwise cannot be completed, our liability shall be limited to the sum actually paid therefor by the purchaser and shall in no event include any compensatory, incidental or consequential damages.

6. If a lot is offered subject to a reserve, we may implement such reserve by bidding on behalf of the consignor, whether by opening bidding or continuing bidding in response to other bidders until reaching the reserve. If we have an interest in an offered lot and the proceeds therefrom other than our commissions, we may bid therefor to protect such interest. **CONSIGNORS ARE NOT ALLOWED TO BID ON THEIR OWN ITEMS.**

7. All statements contained in the catalog or in any bill of sale, condition report, invoice or elsewhere as to authorship, period, culture, source, origin, measurement, quality, rarity, provenance, importance, exhibition and literature of historical relevance, or physical condition **ARE QUALIFIED STATEMENTS OF OPINION AND NOT REPRESENTATIONS OR WARRANTIES.** No employee or agent of Bonhams is authorized to make on our behalf or on that of the consignor any representation or warranty, oral or written, with respect to any property.

8. All purchased property shall be removed from the premises at which the sale is conducted by the date(s) and time(s) set forth in the "Buyer's Guide" portion of this catalog. Property designated with a "W" and associated purchased lots, if not removed promptly following sale, will be transferred to an offsite warehouse at the purchaser's risk and expense, as set forth in more detail in the "Buyer's Guide." Purchased property that is permitted to remain onsite at Bonhams' facility should be removed at the purchaser's expense not later than 5:00 p.m. Pacific Time

five (5) business days following the date of the sale. If not so removed, a storage fee of \$5.00 per lot per day will be payable to us by the purchaser beginning at the close of the 21st day following the sale, and we may thereafter transfer such property to an offsite warehouse at the purchaser's risk and expense. Accounts must be settled in full before property will be released. Packing and handling of purchased lots are the responsibility of the purchaser. Bonhams can provide packing and shipping services for certain items as noted in the "Buyer's Guide" section of the catalog.

9. The copyright in the text of the catalog and the photographs, digital images and illustrations of lots in the catalog belong to Bonhams or its licensors. You will not reproduce or permit anyone else to reproduce such text, photographs, digital images or illustrations without our prior written consent.

10. These Conditions of Sale shall bind the successors and assigns of all bidders and purchasers and inure to the benefit of our successors and assigns. No waiver, amendment or modification of the terms hereof (other than posted notices or oral announcements during the sale) shall bind us unless specifically stated in writing and signed by us. If any part of these Conditions of Sale is for any reason invalid or unenforceable, the rest shall remain valid and enforceable.

11. These Conditions of Sale and the purchaser's and our respective rights and obligations hereunder are governed by the laws of the State of California. By bidding at an auction, each purchaser and bidder agrees to be bound by these Conditions of Sale. Any dispute, controversy or claim arising out of or relating to this agreement, or the breach, termination or validity thereof, brought by or against Bonhams (but not including claims brought against the consignor by the purchaser of lots consigned hereunder) shall be resolved by the procedures set forth below.

MEDIATION AND ARBITRATION PROCEDURES

(a) Within 30 days of written notice that there is a dispute, the parties or their authorized and empowered representatives shall meet by telephone and/or in person to mediate their differences. If the parties agree, a mutually acceptable mediator shall be selected and the parties will equally share such mediator's fees. The mediator shall be a retired judge or an attorney familiar with commercial law and trained in or qualified by experience in handling mediations. Any communications made during the mediation process shall not be admissible in any subsequent arbitration, mediation or judicial proceeding. All proceedings and any resolutions thereof shall be confidential, and the terms governing arbitration set forth in paragraph (c) below shall govern.

(b) If mediation does not resolve all disputes between the parties, or in any event no longer than 60 days after receipt of the written notice of dispute referred to above, the parties shall submit the dispute for binding arbitration before a single neutral arbitrator. Such arbitrator shall be a retired judge or an attorney familiar with commercial law and trained in or qualified by experience in handling arbitrations. Such arbitrator shall make all appropriate disclosures required by law. The arbitrator shall be drawn from a panel of a national arbitration service agreed to by the parties, and shall be selected as follows: (i) If the national arbitration service has specific rules or procedures, those rules or procedures shall be followed; (ii) If the national arbitration service does not have rules or procedures for the selection of an arbitrator, the arbitrator shall be an individual jointly agreed to by the parties. If the parties cannot agree on a national arbitration service, the arbitration shall be conducted by the American Arbitration Association, and the arbitrator shall be selected in accordance with the Rules of the American Arbitration Association. The arbitrator's award

CONDITIONS OF SALE - CONTINUED

shall be in writing and shall set forth findings of fact and legal conclusions.

(c) Unless otherwise agreed to by the parties or provided by the published rules of the national arbitration service:

(i) the arbitration shall occur within 60 days following the selection of the arbitrator;

(ii) the arbitration shall be conducted in the designated location, as follows: (A) in any case in which the subject auction by Bonhams took place or was scheduled to take place in the State of New York or Connecticut or the Commonwealth of Massachusetts, the arbitration shall take place in New York City, New York; (B) in all other cases, the arbitration shall take place in the city of San Francisco, California; and

(iii) discovery and the procedure for the arbitration shall be as follows:

(A) All arbitration proceedings shall be confidential;

(B) The parties shall submit written briefs to the arbitrator no later than 15 days before the arbitration commences;

(C) Discovery, if any, shall be limited as follows: (I) Requests for no more than 10 categories of documents, to be provided to the requesting party within 14 days of written request therefor; (II) No more than two (2) depositions per party, provided however, the deposition(s) are to be completed within one (1) day; (III) Compliance with the above shall be enforced by the arbitrator in accordance with California law;

(D) Each party shall have no longer than eight (8) hours to present its position. The entire hearing before the arbitrator shall not take longer than three (3) consecutive days;

(E) The award shall be made in writing no more than 30 days following the end of the proceeding. Judgment upon the award rendered by the arbitrator may be entered by any court having jurisdiction thereof.

To the fullest extent permitted by law, and except as required by applicable arbitration rules, each party shall bear its own attorneys' fees and costs in connection with the proceedings and shall share equally the fees and expenses of the arbitrator.

LIMITED RIGHT OF RESCISSION

If within one (1) year from the date of sale, the original purchaser (a) gives written notice to us alleging that the identification of Authorship (as defined below) of such lot as set forth in the **BOLD TYPE** heading of the catalog description of such lot (as amended by any saleroom notices or verbal announcements during the sale) is not substantially correct based on a fair reading of the catalog (including the terms of any glossary contained therein), and (b) within 10 days after such notice returns the lot to us in the same condition as at the time of sale, and (c) establishes the allegation in the notice to our satisfaction (including by providing one or more written opinions by recognized experts in the field, as we may reasonably require), then the sale of such lot will be rescinded and, unless we have already paid to the consignor monies owed him in connection with the sale, the original purchase price will be refunded.

If, prior to receiving such notice from the original purchaser alleging such defect, we have paid the consignor monies owed him in connection with the sale, we shall pay the original purchaser the amount of our commissions, any other sale proceeds to which we are entitled and applicable taxes received from the purchaser on the sale and make demand on the consignor to pay the balance of the original purchase price to the original purchaser. Should the consignor fail to pay such amount promptly, we may disclose the identity of the consignor and assign to the original purchaser our rights against the consignor with respect to the lot the sale of which is sought to be rescinded. Upon such disclosure and assignment, any liability of Bonhams as consignor's agent with respect to said lot shall automatically terminate.

The foregoing limited right of rescission is available to the original purchaser only and may not be assigned to or relied upon by any subsequent transferee of the property sold. The purchaser hereby accepts the benefit of the consignor's warranty of title and other representations and warranties made by the consignor for the purchaser's benefit. Nothing in this section shall be construed as an admission by us of any representation of fact, express or implied, obligation or responsibility with respect to any lot. THE PURCHASER'S SOLE AND EXCLUSIVE

REMEDY AGAINST BONHAMS FOR ANY REASON WHATSOEVER IS THE LIMITED RIGHT OF RESCISSION DESCRIBED IN THIS SECTION.

"Authorship" means only the identity of the creator, the period, culture and source or origin of the lot, as the case may be, as set forth in the **BOLD TYPE** heading of the print catalog entry. The right of rescission does not extend to: (a) works of art executed before 1870 (unless these works are determined to be counterfeits created since 1870), as this is a matter of current scholarly opinion which can change; (b) titles, descriptions, or other identification of offered lots, which information normally appears in lower case type below the **BOLD TYPE** heading identifying the Authorship; (c) Authorship of any lot where it was specifically mentioned that there exists a conflict of specialist or scholarly opinion regarding the Authorship of the lot at the time of sale; (d) Authorship of any lot which as of the date of sale was in accordance with the then generally-accepted opinion of scholars and specialists regarding the same; or (e) the identification of periods or dates of creation in catalog descriptions which may be proven inaccurate by means of scientific processes that are not generally accepted for use until after publication of the catalog in which the property is offered or that were unreasonably expensive or impractical to use at the time of such publication.

LIMITATION OF LIABILITY

EXCEPT AS EXPRESSLY PROVIDED ABOVE, ALL PROPERTY IS SOLD "AS IS." NEITHER BONHAMS NOR THE CONSIGNOR MAKES ANY REPRESENTATION OR WARRANTY, EXPRESS OR IMPLIED, AS TO THE MERCHANTABILITY, FITNESS OR CONDITION OF THE PROPERTY OR AS TO THE CORRECTNESS OF DESCRIPTION, GENUINENESS, ATTRIBUTION, PROVENANCE OR PERIOD OF THE PROPERTY OR AS TO WHETHER THE PURCHASER ACQUIRES ANY COPYRIGHTS OR OTHER INTELLECTUAL PROPERTY RIGHTS IN LOTS SOLD OR AS TO WHETHER A WORK OF ART IS SUBJECT TO THE ARTIST'S MORAL RIGHTS OR OTHER RESIDUAL RIGHTS OF THE ARTIST. THE PURCHASER EXPRESSLY ACKNOWLEDGES AND AGREES THAT IN NO EVENT SHALL BONHAMS BE LIABLE FOR ANY DAMAGES INCLUDING, WITHOUT LIMITATION, ANY COMPENSATORY, INCIDENTAL OR CONSEQUENTIAL DAMAGES.

SELLER'S GUIDE

SELLING AT AUCTION

Bonhams can help you every step of the way when you are ready to sell art, antiques and collectible items at auction. Our regional offices and representatives throughout the US are available to service all of your needs. Should you have any further questions, please visit our website at www.bonhams.com/us for more information or call our Client Services Department at +1 (323) 850 7500.

AUCTION ESTIMATES

The first step in the auction process is to determine the auction value of your property. Bonhams' world-renowned specialists will evaluate your special items at no charge and in complete confidence. You can obtain an auction estimate in many ways:

- Attend one of our Auction Appraisal Events held regularly at our galleries and in other major metropolitan areas. The updated schedule for Bonhams Auction Appraisal Events is available at www.bonhams.com/us.
- Call our Client Services Department to schedule a private appointment at one of our galleries. If you have a large collection, our specialists can travel, by appointment, to evaluate your property on site.
- Send clear photographs to us of each individual item, including item dimensions and other pertinent information with each picture. Photos should be sent to Bonhams' address in envelopes marked

as "photo auction estimate". Alternatively, you can submit your request using our online form at www.bonhams.com/us. Digital images may be attached to the form. Please limit your images to no more than five (5) per item.

CONSIGNING YOUR PROPERTY

After you receive an estimate, you may consign your property to us for sale in the next appropriate auction. Our staff assists you throughout the process, arranging transportation of your items to our galleries (at the consignor's expense), providing a detailed inventory of your consignment, and reporting the prices realized for each lot. We provide secure storage for your property in our warehouses and all items are insured throughout the auction process. You will receive payment for your property approximately 35 days after completion of sale.

Sales commissions vary with the potential auction value of the property and the particular auction in which the property is offered. Please call us for commission rates.

PROFESSIONAL APPRAISAL SERVICES

Bonhams' specialists conduct insurance and fair market value appraisals for private collectors, corporations, museums, fiduciaries and government entities on a daily basis. Insurance appraisals, used for insurance purposes, reflect the cost of replacing property in today's retail market. Fair market value appraisals are used for estate,

tax and family division purposes and reflect prices paid by a willing buyer to a willing seller.

When we conduct a private appraisal, our specialists will prepare a thorough inventory listing of all your appraised property by category. Valuations, complete descriptions and locations of items are included in the documentation.

Appraisal fees vary according to the nature of the collection, the amount of work involved, the travel distance, and whether the property is subsequently consigned for auction.

Our appraisers are available to help you anywhere and at any time. Please call our Client Services Department to schedule an appraisal.

ESTATE SERVICES

Since 1865, Bonhams has been serving the needs of fiduciaries – lawyers, trust officers, accountants and executors – in the disposition of large and small estates. Our services are specially designed to aid in the efficient appraisal and disposition of fine art, antiques, jewelry, and collectibles. We offer a full range of estate services, ranging from flexible financial terms to tailored accounting for heirs and their agents to world-class marketing and sales support.

For more information or to obtain a detailed Trust and Estates package, please visit our website at www.bonhams.com/us or contact our Client Services Department.

BUYER'S GUIDE

BIDDING & BUYING AT AUCTION

Whether you are an experienced bidder or an enthusiastic novice, auctions provide a stimulating atmosphere unlike any other. Bonhams previews and sales are free and open to the public. As you will find in these directions, bidding and buying at auction is easy and exciting. Should you have any further questions, please visit our website at www.bonhams.com or call our Client Services Department at +1 (323) 850 7500.

Catalogs

Before each auction we publish illustrated catalogs that include dates and times for previews and auctions. Our catalogs also provide descriptions and estimated values for each "lot." A lot may refer to a single item or to a group of items auctioned together. We offer our catalogs by subscription or by single copy. For information on subscribing to our catalogs, you may refer to the subscription form in this catalog, call our Client Services Department, or visit our website at www.bonhams.com/us.

Previews

Auction previews are your chance to inspect each lot prior to the auction. We encourage you to look closely and examine each object on which you may want to bid so that you will know as much as possible about it. Items are sold "as is" and with all faults; illustrations in our catalogs, website and other materials are provided for identification only. At the previews, our staff is always available to answer your questions and guide you through the auction process. Condition reports may be available upon request.

Estimates

Bonhams catalogs include estimates for each lot, exclusive of buyer's premium and tax. The estimates are provided as an approximate guide to current market value and should not be interpreted as a representation or prediction of actual selling prices. They are determined well in advance of a sale and are subject to revision. Please contact us should you have any questions about value estimates.

Reserves

All lots in a catalog are subject to a reserve unless otherwise indicated. The reserve is the minimum price that the seller is willing to accept for a lot. This amount is confidential and does not exceed the low estimated value.

BIDDING AT AUCTION

At Bonhams, you can bid in many ways: in person, via absentee bid, over the phone, or via Bonhams' online bidding facility. Absentee bids can be submitted in person, online, via fax or via email.

A valid Bonhams client account is required to participate in bidding activity. You can obtain registration information online, at the reception desk or by calling our Client Services Department.

By bidding at auction, whether in person or by agent, by absentee bid, telephone, online or other means, the buyer or bidder agrees to be bound by the Conditions of Sale.

Lots are auctioned in consecutive numerical order as they appear in the catalog. Bidding normally begins below the low estimate. The auctioneer will accept bids from interested parties present in the saleroom, from telephone bidders, and from absentee bidders who have left written bids in advance of the sale. The auctioneer may also execute bids on behalf of the consignor up to the amount of the reserve, but never above it.

We assume no responsibility for failure to execute bids for any reason whatsoever.

In Person

If you are planning to bid at auction, you will need to register at the reception desk in order to receive a numbered bid card. To place a bid, hold up your card so that the auctioneer can clearly see it. Decide on the maximum amount that you wish to pay, exclusive of buyer's premium and tax, and continue bidding until your bid prevails or you reach your limit. If you are the successful bidder on a lot, the auctioneer will acknowledge your paddle number and bid amount.

Absentee Bids

As a service to those wishing to place bids, we may at our discretion accept bids without charge in advance of sale by telephone, by facsimile or in writing on bidding forms available from us. "Buy" bids will not be accepted; all bids must state the highest bid price the bidder is willing to pay. Our auction staff will try to bid just as you would, with the

goal of obtaining the item at the lowest bid price possible. In the event identical bids are submitted, the earliest bid submitted will take precedence. Absentee bids shall be executed in competition with other absentee bids, any applicable reserve, and bids from other auction participants. A friend or agent may place bids on your behalf, provided that we have received your written authorization prior to the sale. Absentee bid forms are available in our catalogs, online at www.bonhams.com/us, and at our San Francisco, Los Angeles and New York galleries.

By Telephone

Under special circumstances, we can arrange for you to bid by telephone. To arrange for a telephone bid, please contact our Client Services Department a minimum of 24 hours prior to the sale.

Online

Web users may place absentee bids online from anywhere in the world. To bid online, please visit our website at www.bonhams.com/us.

We are pleased to make our live online bidding facility available to bidders in this sale.

Additional terms and conditions of sale relating to online bidding will apply. Please see www.bonhams.com/24982 or contact the Client Services Department to obtain information and learn how you can register and bid online in this sale.

Bid Increments

Bonhams generally uses the following increment multiples as bidding progresses:

| | |
|-------------------------|----------------------------|
| \$50-200 | by \$10s |
| \$200-500 | by \$20/50/80s |
| \$500-1,000 | by \$50s |
| \$1,000-2,000 | by \$100s |
| \$2,000-5,000 | by \$200/500/800s |
| \$5,000-10,000 | by \$500s |
| \$10,000-20,000 | by \$1,000s |
| \$20,000-50,000 | by \$2,000/5,000/8,000s |
| \$50,000-100,000 | by \$5,000s |
| \$100,000-200,000 | by \$10,000s |
| above \$200,000 | at auctioneer's discretion |

The auctioneer may split or reject any bid at any time at his or her discretion as outlined in the Conditions of Sale.

Currency Converter

Solely for the convenience of bidders, a currency converter may be provided at Bonhams sales. The rates quoted for conversion of other currencies to U.S. Dollars are indications only and should not be relied upon by a bidder, and neither Bonhams nor its agents shall be responsible for any errors or omissions in the operation or accuracy of the currency converter.

Buyer's Premium

A buyer's premium is added to the winning bid price of each individual lot purchased, at the rates set forth in the Conditions of Sale. The winning bid price plus the premium constitute the purchase price for the lot. Applicable sales taxes are computed based on this figure, and the total becomes your final purchase price.

Unless specifically illustrated and noted, fine art frames are not included in the estimate or purchase price. Bonhams accepts no liability for damage or loss to frames during storage or shipment.

All sales are final and subject to the Conditions of Sale found in our catalogs, on our website, and available at the reception desk.

Payment

All buyers are asked to pay and pick up by 3pm on the business day following the auction. Payment may be made to Bonhams by cash, checks drawn on a U.S. bank, money order, wire transfer, or by Visa, MasterCard, American Express or Discover credit or charge card or debit card. All items must be paid for within 5 business days of the sale. Please note that payment by personal or business check may result in property not being released until purchase funds clear our bank.

Sales Tax

Residents of states listed in Paragraph 1 of the Conditions of Sale must pay applicable sales tax. Other state or local taxes (or compensation use taxes) may apply. Sales tax will

be automatically added to the invoice unless a valid resale number has been furnished or the property is shipped via common carrier to destinations outside the states listed in the Conditions of Sale. If you wish to use your resale license please contact Cashiers for our form.

Shipping & Removal

Buyers are to review the Offsite Sold Property Storage page for a list of lots that will be removed to the offsite warehouse of Box, Pack, & Ship, Inc. These designated lots must be retrieved by the buyer prior to the day and time designated on the Offsite Sold Property Storage page. If buyers of these designated lots also buy other lots, such as decorations, rugs or works of art, these lots may also be removed to the warehouse of Box, Pack, & Ship, Inc, so all lots remain together and customers can collect or ship from one location. All other items will remain at Bonhams for a period of 21 days, after which time they may be transferred to offsite storage. Wine, Jewelry, Natural History, Collectibles, 20th Century Decorative Arts, Rugs, Native American Art, Tribal Art and most Arms & Armor auctions are not included in this policy.

Box, Pack, & Ship, Inc, 3800 S. Main Street
Los Angeles, CA 90037
+1 (800) 674 4705 Toll Free & Fax
323.432.2477 Office

Box, Pack, & Ship, Inc is open Monday-Friday 8am-5pm with Saturday and Sunday hours available. Buyers must contact Box, Pack, & Ship, Inc 24 hours in advance of pickup. Appointments are required.

Bonhams can accommodate shipping for certain items. Please contact our Cashiers Department for more information or to obtain a quote. Refer to Conditions of Sale for special terms governing the shipment of Arms and Wine. Shipments are made during weekday business hours up to four weeks after payment is received. Carriers are not permitted to deliver to P.O. Boxes.

International buyers are responsible for all import/export customs duties and taxes. An invoice stating the actual purchase price(s) will accompany all international purchases.

Simultaneous sale property collection notice:

If this sale previews in multiple cities, please see the title page for details regarding final location of property for collection.

Handling and Storage Charges

Please note: For sold lots removed to Box, Pack, & Ship, Inc, there will be no post-sale storage charge for lots collected within 5 days from the sale date. For lots that remain at Bonhams, there will be no post-sale storage charge for lots collected within 21 days of the sale date. Handling fees may apply.

Lots uncollected at Bonhams after 21 days may be removed to the warehouse of Box, Pack, & Ship, Inc. Handling and storage fees will apply.

Insurance: All sold lots are insured by Box, Pack, & Ship, Inc at the sum of the hammer price plus buyer's premium.

Please refer to Box, Pack, & Ship, Inc for a list of Handling, Storage and Insurance fees.

Payment

Payments for purchased lots must be made directly to Bonhams. Box, Pack, & Ship, Inc will not release property to a buyer unless the buyer has paid Bonhams first. All charges for handling and storage due to Box, Pack, & Ship, Inc must be paid by the time of collection from their warehouse. Please telephone Box, Pack, & Ship, Inc at +1 (800) 674 4705 in advance to ascertain the amount due. **Lots will only be released from Box, Pack, & Ship, Inc' warehouse with a "Release Order" obtained from the cashier's office at Bonhams.**

The removal/storage and/or shipment by Box, Pack, & Ship, Inc of any lots will be subject to their standard Conditions of Business, copies of which are available at Bonhams or from Box, Pack, & Ship, Inc directly.

Auction Results

Auction results are usually available on the next business day following the sale or online at www.bonhams.com/us.

CONTACTS

OFFICERS

Malcolm Barber
Co-Chairman

Matthew Girling
Chief Executive Officer

Laura King Pfaff •
Chairman Emeritus

Leslie Wright
Deputy Chairman Vice President,
Trusts and Estates

Vice Presidents, Specialists

Rupert Banner
Mark Fisher
Dessa Goddard
Jakob Greisen
Bruce MacLaren
Scot Levitt
Mark Osborne
Brooke Sivo
Catherine Williamson

REPRESENTATIVES

Arizona

Terri Adrian-Hardy, (602) 859 1843

California

David Daniel
(916) 364 1645, Central Valley

California

Brooke Sivo
(760) 350 4255, Palm Springs
(760) 567 1744, San Diego

Chicago

Natalie Waechter, (312) 972 2719

Colorado

Lance Vigil
(720) 355 3737, Denver

Florida

April Matteini, (305) 978 2459
Alexis Cronin Butler, (305) 878 5366

Georgia

Mary Moore Bethea, (404) 842 1500 •

Illinois

Ricki Harris
(773) 267 3300, (773) 680 2881

Massachusetts/New England

Amy Corcoran, (617) 742 0909

Nevada

David Daniel, (775) 831 0330

New Mexico

Terri Adrian-Hardy, (602) 859 1843

Oregon and Idaho

Sheryl Acheson, (971) 727 7797

Texas, Oklahoma and Louisiana

Amy Lawch, (713) 621 5988 •

Virginia and Washington DC

Mid-Atlantic Region
Gertraud Hechl, (202) 422 2733 •

Washington

Heather O'Mahony, (206) 566 3913

Canada, Toronto, Ontario

Kristin Kearney, (416) 462 9004 •

Montreal, Quebec

David Kelsey, (514) 894 1138 •

BONHAMS *

NEW YORK DEPARTMENTS
580 Madison Avenue
New York, New York 10022
(212) 644 9001

Books & Manuscripts

Ian Ehling, (212) 644 9094
Darren Sutherland, (212) 461 6531

Chinese Works of Art & Paintings

Bruce MacLaren, (917) 206 1677
Ming Hua, (646) 837 8132
Harold Yeo, (917) 206 1628 •

Collectors' Motorcars & Motorcycles

Rupert Banner, (212) 461 6515
Eric Minoff, (917) 206 1630
Evan Ide, (917) 340 4657
Michael Caimano, (917) 206 1615

American Art

Jennifer Jacobsen, (917) 206 1699
Elizabeth Goodridge, (917) 206 1621

Contemporary Art

Jeremy Goldsmith, (917) 206 1656

European Paintings

Madalina Lazen, (212) 644 9108

Impressionist & Modern Art

Caitlyn Pickens, (212) 644 9135

Himalayan Art

Mark Rasmussen, (917) 206 1688

Japanese Works of Art

Jeff Olson, (212) 461 6516

Jewelry

Caroline Morrissey, (212) 644 9046
Camille Barbier, (212) 644 9035

Modern Decorative Arts & Design

Benjamin Walker, (212) 710 1306
Dan Tolson, (917) 206 1611

Photographs

Laura Paterson, (917) 206 1653

Prints and Multiples

Deborah Ripley, (212) 644 9059

Russian Fine & Decorative Arts

Yelena Harbick, (212) 644 9136

Trusts & Estates

Sherri Cohen, (917) 206 1671

Watches & Clocks

Jonathan Snellenburg, (212) 461 6530

CLIENT SERVICES DEPARTMENT

San Francisco

(415) 861 7500
(415) 861 8951 fax

Monday - Friday, 9am to 5pm

Los Angeles

(323) 850 7500
(323) 850 6090 fax

Monday - Friday, 9am to 5pm

BONHAMS *

SAN FRANCISCO DEPARTMENTS
220 San Bruno Avenue
San Francisco California 94103
(415) 861 7500

20th Century Fine Art

Sonja Moro, (415) 503 3412

Books & Manuscripts

Adam Stackhouse, (415) 503 3266

Chinese Works of Art

Dessa Goddard, (415) 503 3333
Henry Kleinhenz, (415) 503 3336
Daniel Herskee, (415) 503 3271
Lingling Shang, (415) 503 3207 •
Amelia Chao, (415) 503 3397

Furniture & Decorative Arts

Caroline Cole, (415) 503 3400

Jewelry & Watches

Shannon Beck, (415) 503 3306

Collectors' Motorcars & Motorcycles

Mark Osborne, (415) 503 3353
Jakob Greisen, (415) 503 3284

Museum Services

Laura King Pfaff, (415) 503 3210

Native American Art

Ingmars Lindbergs, (415) 503 3393

California & Western

Paintings & Sculpture
Aaron Bastian, (415) 503 3241

Prints & Photographs

Morisa Rosenberg, (415) 503 3259

Space History

Adam Stackhouse, (415) 503 3266

Wine

Erin McGrath, (415) 503 3319

Trusts & Estates

Victoria Richardson, (415) 503 3207
Celeste Smith, (415) 503 3214

BONHAMS *

LOS ANGELES DEPARTMENTS
7601 W. Sunset Boulevard
Los Angeles California 90046
(323) 850 7500

20th Century Decorative Arts & Design

Angela Past, (323) 436 5422
Jason Stein, (323) 436 5466

Post-War & Contemporary Art

Alexis Chompaisal, (323) 436 5469

Asian Works of Art

Rachel Du, (323) 436 5587

African, Oceanic & Pre-Columbian Art

Fredric W. Backlar, (323) 436 5416 •

Books & Manuscripts

Catherine Williamson, (323) 436 5442

Coins & Banknotes

Paul Song, (323) 436 5455

Impressionist & Modern Art

Kathy Wong, (323) 436 5415

Entertainment Memorabilia

Catherine Williamson, (323) 436 5442
Dana Hawkes, (978) 283 1518

Jewelry & Watches

Dana Ehrman, (323) 436 5407
Alexis Vourvoulis, (323) 436 5483

Collectors' Motorcars & Motorcycles

Michael Caimano, (929) 666 2243

Prints & Photographs

Morisa Rosenberg, (323) 436 5435

Natural History

Thomas E. Lindgren, (310) 469 8567 •
Claudia Florian, G.J.G., (323) 436 5437 •

California & Western

Paintings & Sculpture
Scot Levitt, (323) 436 5425
Kathy Wong, (323) 436 5415

European Paintings

Mark Fisher, (323) 436 5488
Rocco Rich, (323) 436 5410

Trusts & Estates

Leslie Wright, (323) 436 5408
Joseph Francaviglia, (323) 436 5443

* Indicates saleroom
• Indicates independent contractor

Auction Registration Form

(Attendee / Absentee / Online / Telephone Bidding)

Please circle your bidding method above.

| | | | |
|--|--|--|--|
| | | | |
|--|--|--|--|

Paddle number (for office use only)

General Notice: This sale will be conducted in accordance with Bonhams Conditions of Sale, and your bidding and buying at the sale will be governed by such terms and conditions. Please read the Conditions of Sale in conjunction with the Buyer's Guide relating to this sale and other published notices and terms relating to bidding. Payment by personal or business check may result in your property not being released until purchase funds clear our bank. Checks must be drawn on a U.S. bank.

Notice to Absentee Bidders: In the table below, please provide details of the lots on which you wish to place bids at least 24 hours prior to the sale. Bids will be rounded down to the nearest increment. Please refer to the Buyer's Guide in the catalog for further information relating to instructions to Bonhams to execute absentee bids on your behalf. Bonhams will endeavor to execute bids on your behalf but will not be liable for any errors or non-executed bids.

Notice to First Time Bidders: New clients are requested to provide photographic proof of ID - passport, driving license, ID card, together with proof of address - utility bill, bank or credit card statement etc. Corporate clients should also provide a copy of their articles of association / company registration documents, together with a letter authorizing the individual to bid on the company's behalf. Failure to provide this may result in your bids not being processed. For higher value lots you may also be asked to provide a bankers reference.

Notice to online bidders; If you have forgotten your username and password for www.bonhams.com, please contact Client Services.

If successful

- I will collect the purchases myself
- Please contact me with a shipping quote (if applicable)
- I will arrange a third party to collect my purchase(s)

Please email or fax the completed Registration Form and requested information to:

Bonhams Client Services Department
7601 W. Sunset Blvd
Los Angeles, California 90046
Tel +1 (323) 850 7500
Fax +1 (323) 850 6090
bids.us@bonhams.com

Bonhams

| | |
|---|--|
| Sale title: Modern Decorative Art + Design | Sale date: Wednesday October 25, 2018 |
| Sale no. 24982 | Sale venue: Los Angeles |
| General Bid Increments: \$10 - 200by 10s \$200 - 500by 20 / 50 / 80s \$500 - 1,000by 50s \$1,000 - 2,000by 100s \$2,000 - 5,000by 200 / 500 / 800s \$5,000 - 10,000by 500s \$10,000 - 20,000by 1,000s \$20,000 - 50,000by 2,000 / 5,000 / 8,000s \$50,000 - 100,000by 5,000s \$100,000 - 200,000by 10,000s above \$200,000at the auctioneer's discretion The auctioneer has discretion to split any bid at any time. | |
| Customer Number | Title |
| First Name | Last Name |
| Company name (to be invoiced if applicable) | |
| Address | |
| City | County / State |
| Post / Zip code | Country |
| Telephone mobile | Telephone daytime |
| Telephone evening | Fax |
| Telephone bidders: indicate primary and secondary contact numbers by writing ① or ② next to the telephone number. | |
| E-mail (in capitals) _____ | |
| By providing your email address above, you authorize Bonhams to send you marketing materials and news concerning Bonhams and partner organizations. Bonhams does not sell or trade email addresses. | |
| I am registering to bid as a private client <input type="checkbox"/> | I am registering to bid as a trade client <input type="checkbox"/> |
| Resale: please enter your resale license number here _____ We may contact you for additional information. | |

| SHIPPING |
|---|
| Shipping Address (if different than above): |
| Address: _____ Country: _____ |
| City: _____ Post/ZIP code: _____ |

Please note that all telephone calls are recorded.

| Type of bid (A-Absentee, T-Telephone) | Lot no. | Brief description (In the event of any discrepancy, lot number and not lot description will govern.) If you are bidding online there is no need to complete this section. | MAX bid in US\$ (excluding premium and applicable tax) Emergency bid for telephone bidders only* |
|---------------------------------------|---------|---|--|
| | | | |
| | | | |
| | | | |
| | | | |
| | | | |
| | | | |
| | | | |
| | | | |

You instruct us to execute each absentee bid up to the corresponding bid amount indicated above.

* Emergency Bid: A maximum bid (exclusive of Buyer's Premium and tax) to be executed by Bonhams **only** if we are unable to contact you by telephone or should the connection be lost during bidding.

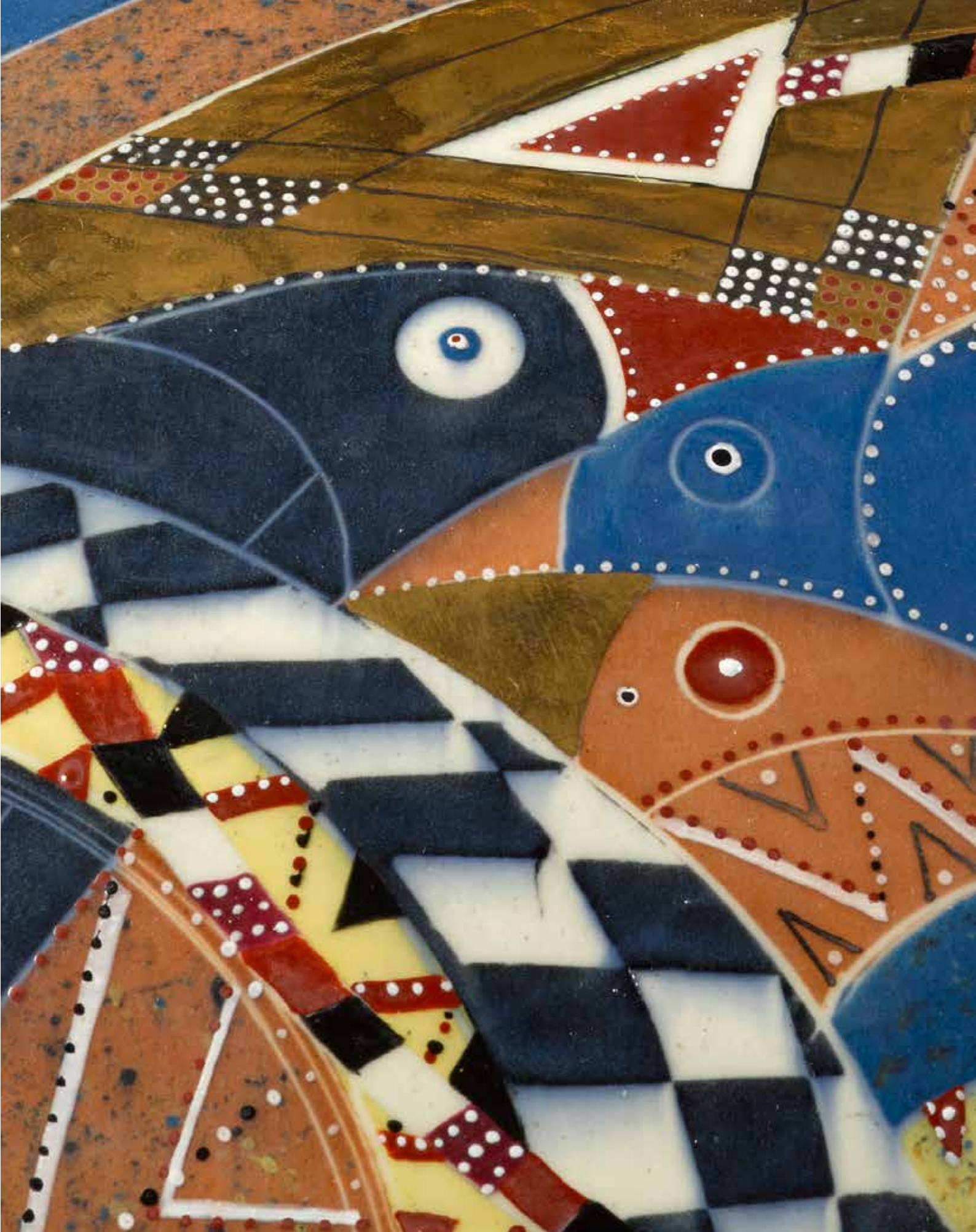
BY SIGNING THIS FORM YOU AGREE THAT YOU HAVE READ AND UNDERSTAND OUR CONDITIONS OF SALE AND SHALL BE LEGALLY BOUND BY THEM, AND YOU AGREE TO PAY THE BUYER'S PREMIUM, ANY APPLICABLE TAXES, AND ANY OTHER CHARGES MENTIONED IN THE BUYER'S GUIDE OR CONDITIONS OF SALE. THIS AFFECTS YOUR LEGAL RIGHTS.

| | |
|-----------------|-------|
| Your signature: | Date: |
|-----------------|-------|

INDEX

| ENTRY | LOT NO'S | | |
|--|--|--|---|
| Adnet, Jacques | 135 | Littleton, Harvey | 300 |
| Andersen, Just | 48 | Livingston, Edward G. | 238 |
| Argy-Rousseau, Gabriel | 27, 28 | Loetz | 44, 45 |
| ARP; Attributed to | 144 | Lorenzi, Josef | 37 |
| Autio, Rudy | 285 | Lyell, Lanny | 243 |
| Bacerra, Ralph | 290 | Macció, Romulo | 95 |
| Bailey, Maurice | 170 | Maison Bagues | 124 |
| Barbini, Alfredo | 86 | Makins, James | 294 |
| Barovier, Ercole | 76, 77 | Maldonado, Ricky | 291 |
| Barovier, Ercole; Attributed to | 73 | Malooof, Sam | 239, 240, 241, 242 |
| Bayer, Herbert | 151 | Man Ray | 175 |
| Benson, W.A.S. | 123 | Marquis, Richard | 78 |
| Bianconi, Fulvio | 67 | Mathsson, Bruno | 152, 154 |
| Bojesen, Kay | 112 | Maugham, Syrie | 201, 202 |
| Bolotowsky, Ilya | 128, 129 | Mazzega | 301 |
| Bouraine, Marcel-André | 36 | McCobb, Paul | 100, 145 |
| Brazier-Jones, Mark | 215, 216, 217, 218, 219, 220, 221, 223, 227, 228, 229, 230, 231, 232, 233 | McIntosh, Harrison | 261 |
| Calder, Alexander | 130 | Morales, Jesús Bautista | 298 |
| Callas, Peter | 269 | Mouille, Serge | 106 |
| Capron, Roger | 99 | Mouthrop, Edward | 244, 245 |
| Cardew, Michael | 265 | Nason, Carlo | 150 |
| Celotto, Afro; Attributed to | 180 | Natzler, Gertrud & Otto | 286 |
| Chaleff, Paul | 282 | Newcomb College | 1 |
| Chalon, Louis | 54 | Newson, Marc | 176 |
| Chihuly, Dale | 315, 316, 317, 318 | Noguchi, Isamu | 105, 107 |
| Chiparus, Demetre H. | 38, 39, 52 | Novembre, Fabio | 179 |
| Dailey, Dan | 302 | Ohrström, Edvin | 90 |
| Daum Frères | 12, 15, 16, 29, 30, 31, 32, 33, 34 | Olitski, Jules | 155, 158 |
| Delamarre, Raymond | 61 | Palusky, Robert | 278 |
| Delaunay, Sonia | 50 | Pani, Arturo; Attributed to | 122, 148 |
| Despret, Georges | 26 | Pascaud, Jean | 51 |
| Dickinson, John | 126, 156, 157, 159, 160, 161, 162, 163, 165, 166 | Pavlik, Michael | 312 |
| Dixon, Tom | 222, 224, 234, 235 | Perelda, Pollio | 68, 74 |
| Duckworth, Ruth | 283 | Powolny, Michael; Attributed to | 42 |
| Dunand, Jean | 40 | Prutscher, Otto; Attributed to | 56 |
| Duquette, Tony | 186, 187, 188, 189, 190, 191, 192, 193, 194, 195, 196, 197, 198, 199, 200, 203, 204, 205, 206, 207, 208, 209, 210 211, 212, 214 | Rastad, Rolf and Adolf Relling | 97 |
| D'Urso, Joe | 181 | Ray-Ban | 213 |
| Eames, Charles & Ray | 113 | Redmile, Anthony | 125 |
| Ernst, Max | 118 | Reed, Paul | 177 |
| Ernstson, George | 182, 183, 184 | Regan, David | 284 |
| Evans, Paul | 167, 168, 171 | Reitz, Don | 271 |
| Exnar, Jan | 311 | Relling, Adolf and Rolf Rastad | 97 |
| Faraone | 295 | Rie, Lucie | 266 |
| Ferguson, Ken | 268, 277 | Rivers, Larry | 98 |
| Ferguson, Kenneth | 268, 277 | Robsjohn-Gibbings, T.H. | 127 |
| Fornasetti, Piero | 225, 226 | Rousseau, François-Eugene and Ernest-Baptiste Leveillé | 19, 20 |
| Fuga, Anzolo | 70, 72, 75, 80 | Royal, Richard | 303 |
| Gallé, Émile | 11, 13, 17, 21, 22, 23, 24, 25 | Ruffner, Ginny | 304, 305 |
| Gambone, Bruno | 91, 92 | Ruys, Raymond | 43 |
| Gate, Simon | 85, 89 | Saarinén, Eiel | 301 |
| Glick, John | 288, 289 | Sakier, George | 149 |
| Goossens, Robert | 174 | Salviati and Co. | 64 |
| Guariche, Pierre; Attributed to | 133 | Savage, Augusta | 60 |
| Guernonprez, Trude | 108 | Scavini, Elena Konig | 57 |
| Guillaumier, Gordon | 185 | Seguso, Archimede | 71 |
| Guillerme et Chambron | 119 | Seguso, Livio | 87 |
| Hagenauer, Karl | 55 | Soldner, Paul | 293 |
| Hald, Edward | 88 | Staley, Chris | 292 |
| Hein Eek, Piet | 178 | Steinberg, Saul | 104 |
| Heino, Otto & Vivika | 236, 262 | Takaezu, Toshiko | 260 |
| Higby, Wayne | 270 | Tatsuzo, Shimaoka | 258, 267 |
| Hoglund, Erik | 83 | Tiffany Studios | 3, 4, 5, 6, 7, 8, 9, 10 |
| Hoshino, Satoru | 147 | Tobey, Mark | 132, 164 |
| Hudson, Robert | 297 | Toshiko, Takaezu | 260 |
| Jacopi, Abele | 59 | Toso, Aureliano; Attributed to | 79 |
| Jalk, Grete | 109 | Toso, Ermanno | 65 |
| Jeanneret, Pierre | 136, 137, 138, 139, 140, 141, 142, 143 | Toso, Fratelli; attributed to | 66 |
| Jenkins, Paul | 169, 172 | Trinkley, Karla | 306 |
| Jones, Charles Hollis | 153 | Tsujimura, Shiro | 259 |
| Kagan, Vladimir | 237 | Tura, Aldo | 173 |
| Karnes, Karen | 272, 273, 274, 275, 276, 279 | Vallerysthal | 18 |
| Kjaer, Jacob | 93 | Vallien, Bertil | 313, 314 |
| Knox, Archibald | 46 | van Erp, Dirk | 2 |
| Kohlmeyer, Ida | 299 | Vecchi, Gabrielle de | 296 |
| Korschann, Charles | 53 | Versace, Gianni | 69 |
| Kyle, Frank | 111 | Vetzeria Fratelli Toso | 62 |
| Lalique, René | 14 | Voulkos, Peter | 246, 247, 248, 249, 250, 251, 252, 253, 254, 255, 256, 257 |
| LaPaglia, Alphonse | 47 | Wanschler, Ole; Attributed to | 120 |
| Leach, Bernard | 280 | Wegner, Hans J. | 94, 96, 103, 114, 115, 116, 134 |
| Leach, David | 281 | Weinberg, Steven | 307, 308, 309, 310 |
| Lenci | 58 | Wildenhain, Marguerite | 263, 264 |
| Leveillé, Ernest-Baptiste and François-Eugene Rousseau | 19, 20 | Wilke, Ulfert | 102 |
| Lindstrand, Vickie | 81, 84 | Wood, Beatrice | 287 |
| | | Zach, Bruno | 35 |
| | | Zuccheri, Toni | 82 |
| | | Zuffi, Vittorio | 63 |







Bonhams
7601 W. Sunset Boulevard
Los Angeles CA 90046

+1 323 850 7500
bonhams.com

AUCTIONEERS SINCE 1793